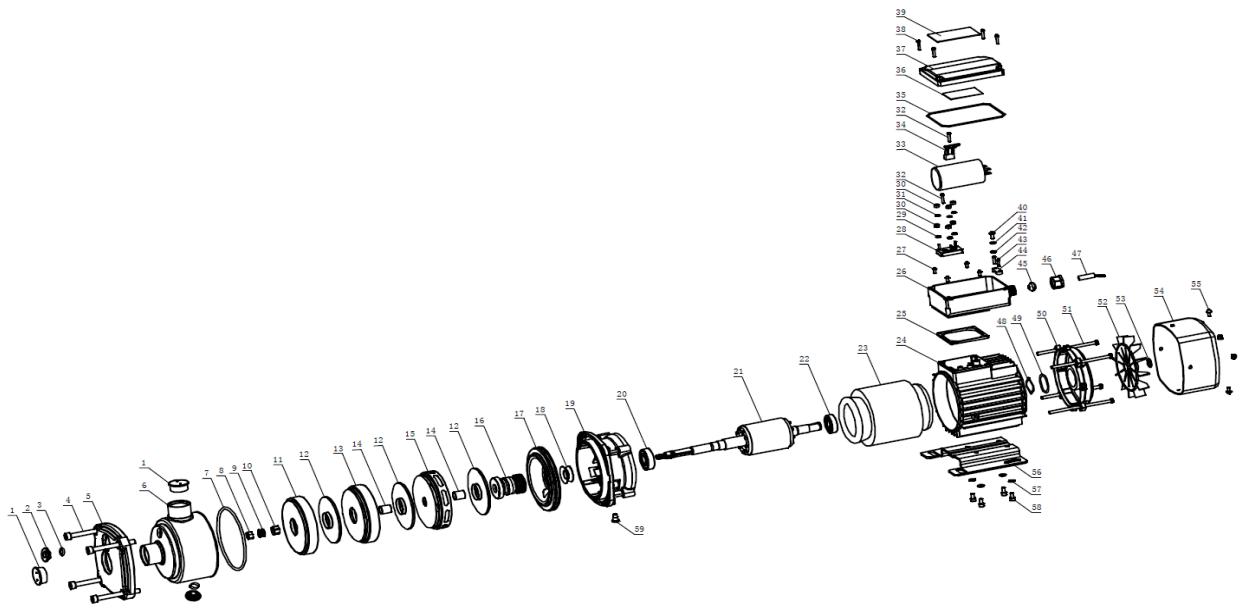


BHM Pump



BHM3-4			
No	Description	Code	Use
1	DUST PROOF COVER BHM3	BIA-BHM3-4-1	
2	DRAIN PLUG BHM3	BIA-BHM3-4-2	
3	ORING D15 X 2.4 BHM3	BIA-BHM3-4-3	
4	HEX SCREW BHM3	BIA-BHM3-4-4	
5	CLAMP PLATE BHM3	BIA-BHM3-4-5	
6	PUMP CASING BHM3	BIA-BHM3-4-6	
7	ORING D116 X 4 BHM3	BIA-BHM3-4-7	
8	HEX NUT M8 BHM3	BIA-BHM3-4-8	
9	WASHER BHM3	BIA-BHM3-4-9	
10	FIX RING BHM3	BIA-BHM3-4-10	
11	PIMARY DIFFUSER BHM3	BIA-BHM3-4-11	
12	IMPELLER BHM3	BIA-BHM3-4-12	
13	DIFFUSER BHM3	BIA-BHM3-4-13	
14	SHAFT SLEEVE BHM3	BIA-BHM3-4-14	
15	OUTLET SECTION BHM3	BIA-BHM3-4-15	
16	MECHANICAL SEAL BHM3	BIA-BHM3-4-16	
17	SEAL PLATE BHM3	BIA-BHM3-4-17	
18	WASHER BHM3	BIA-BHM3-4-18	
19	PUMP COVER BHM3	BIA-BHM3-4-19	
20	BEARING 6202 BHM3	BIA-BHM3-4-20	
21	ROTOR BHM3	BIA-BHM3-4-21	USE BIA-BHM3-4-MOTOR
22	BEARING 6201 BHM3	BIA-BHM3-4-22	
23	STATOR BHM3	BIA-BHM3-4-23	USE BIA-BHM3-4-MOTOR
24	MOTOR HOUSING BHM3	BIA-BHM3-4-24	
25	TERMINAL BOX PAD BHM3	BIA-BHM3-4-25	
26	JUNCTION BOX BHM3	BIA-BHM3-4-26	
27	SCREW M4 X 8 BHM3	BIA-BHM3-4-27	
28	CONNECTION POLE BHM3	BIA-BHM3-4-28	
29	LOCK WASHER BHM3	BIA-BHM3-4-29	

No	Description	Code	Use
30	HEX NUT M8 BHM3	BIA-BHM3-4-30	
31	PLAIN WASHER BHM3	BIA-BHM3-4-31	
32	SCREW ST3.5 X 12 BHM3	BIA-BHM3-4-32	
33	CAPACITOR 10UF BHM3	BIA-BHM3-4-33	
34	CAPACITOR GLAND BHM3	BIA-BHM3-4-34	
35	ORING D120 X 2 BHM3	BIA-BHM3-4-35	
36	WIRING DIAGRAM BHM3	BIA-BHM3-4-36	
37	TERMINAL BOX COVER BHM3	BIA-BHM3-4-37	
38	SCREW ST3.5 X 12 BHM3	BIA-BHM3-4-38	
39	NAME LABEL BHM3	BIA-BHM3-4-39	
40	SCREW M5 X 12 BHM3	BIA-BHM3-4-40	
41	SPRING WASHER BHM3	BIA-BHM3-4-41	
42	WASHER BHM3	BIA-BHM3-4-42	
43	SCREW ST3.5X16 BHM3	BIA-BHM3-4-43	
44	CABLE GLAND BHM3	BIA-BHM3-4-44	
45	JUNCTION BOX NUT PLUG BHM3	BIA-BHM3-4-45	
46	JUNCTION BOX NUT BHM3	BIA-BHM3-4-46	
47	CABLE BHM3	BIA-BHM3-4-47	
48	THREE WAVE RING BHM3	BIA-BHM3-4-48	
49	ORING D32 X 2.65 BHM3	BIA-BHM3-4-49	
50	MOTOR END PLATE BHM3	BIA-BHM3-4-50	
51	HEXANGONAL STUD BOLT BHM3	BIA-BHM3-4-51	
52	FAN BHM3	BIA-BHM3-4-52	
53	AXIAL SPRING COLLAR BHM3	BIA-BHM3-4-53	
54	FAN COVER BHM3	BIA-BHM3-4-54	
55	BOLT AND WASHER ASSEMBLY SCREWS BHM3	BIA-BHM3-4-55	
56	BASE FRAME BHM3	BIA-BHM3-4-56	
57	SPRING WASHER BHM3	BIA-BHM3-4-57	
58	HEX SCREW BHM3	BIA-BHM3-4-58	
59	DRAIN PLUG BHM3	BIA-BHM3-4-59	
	MOTOR ASSEMBLY BHM3-4	BIA-BHM3-4-MOTOR	

BHM3-6			
No	Description	Code	Use
1	DUST PROOF COVER BHM3	BIA-BHM3-6-1	USE BIA-BHM3-4-1
2	DRAIN PLUG BHM3	BIA-BHM3-6-2	USE BIA-BHM3-4-2
3	ORING D15 X 2.4 BHM3	BIA-BHM3-6-3	USE BIA-BHM3-4-3
4	HEX SCREW BHM3	BIA-BHM3-6-4	USE BIA-BHM3-4-4
5	CLAMP PLATE BHM3	BIA-BHM3-6-5	USE BIA-BHM3-4-5
6	PUMP CASING BHM3	BIA-BHM3-6-6	USE BIA-BHM3-4-6
7	ORING D116 X 4 BHM3	BIA-BHM3-6-7	USE BIA-BHM3-4-7
8	HEX NUT M8 BHM3	BIA-BHM3-6-8	USE BIA-BHM3-4-8
9	WASHER BHM3	BIA-BHM3-6-9	USE BIA-BHM3-4-9
10	FIX RING BHM3	BIA-BHM3-6-10	USE BIA-BHM3-4-10
11	PIMARY DIFFUSER BHM3	BIA-BHM3-6-11	USE BIA-BHM3-4-11
12	IMPELLER BHM3	BIA-BHM3-6-12	USE BIA-BHM3-4-12
13	DIFFUSER BHM3	BIA-BHM3-6-13	USE BIA-BHM3-4-13
14	SHAFT SLEEVE BHM3	BIA-BHM3-6-14	USE BIA-BHM3-4-14
15	OUTLET SECTION BHM3	BIA-BHM3-6-15	USE BIA-BHM3-4-15
16	MECHANICAL SEAL BHM3	BIA-BHM3-6-16	USE BIA-BHM3-4-16
17	SEAL PLATE BHM3	BIA-BHM3-6-17	USE BIA-BHM3-4-17
18	WASHER BHM3	BIA-BHM3-6-18	USE BIA-BHM3-4-18
19	PUMP COVER BHM3	BIA-BHM3-6-19	USE BIA-BHM3-4-19
20	BEARING 6202 BHM3	BIA-BHM3-6-20	USE BIA-BHM3-4-20
21	ROTOR BHM3	BIA-BHM3-6-21	USE BIA-BHM3-6-MOTOR
22	BEARING 6201 BHM3	BIA-BHM3-6-22	USE BIA-BHM3-4-22

No	Description	Code	Use
23	STATOR BHM3	BIA-BHM3-6-23	USE BIA-BHM3-6-MOTOR
24	MOTOR HOUSING BHM3	BIA-BHM3-6-24	USE BIA-BHM3-6-MOTOR
25	TERMINAL BOX PAD BHM3	BIA-BHM3-6-25	
26	JUNCTION BOX BHM3	BIA-BHM3-6-26	
27	SCREW M4 X 8 BHM3	BIA-BHM3-6-27	
28	CONNECTION POLE BHM3	BIA-BHM3-6-28	
29	LOCK WASHER BHM3	BIA-BHM3-6-29	
30	HEX NUT M8 BHM3	BIA-BHM3-6-30	
31	PLAIN WASHER BHM3	BIA-BHM3-6-31	
32	SCREW ST3.5 X 12 BHM3	BIA-BHM3-6-32	
33	CAPACITOR 10UF BHM3	BIA-BHM3-6-33	
34	CAPACITOR GLAND BHM3	BIA-BHM3-6-34	
35	ORING D120 X 2 BHM3	BIA-BHM3-6-35	
36	WIRING DIAGRAM BHM3	BIA-BHM3-6-36	
37	TERMINAL BOX COVER BHM3	BIA-BHM3-6-37	
38	SCREW ST3.5 X 12 BHM3	BIA-BHM3-6-38	
39	NAME LABEL BHM3	BIA-BHM3-6-39	
40	SCREW M5 X 12 BHM3	BIA-BHM3-6-40	
41	SPRING WASHER BHM3	BIA-BHM3-6-41	
42	WASHER BHM3	BIA-BHM3-6-42	
43	SCREW ST3.5X16 BHM3	BIA-BHM3-6-43	
44	CABLE GLAND BHM3	BIA-BHM3-6-44	
45	JUNCTION BOX NUT PLUG BHM3	BIA-BHM3-6-45	
46	JUNCTION BOX NUT BHM3	BIA-BHM3-6-46	
47	CABLE BHM3	BIA-BHM3-6-47	
48	THREE WAVE RING BHM3	BIA-BHM3-6-48	
49	ORING D32 X 2.65 BHM3	BIA-BHM3-6-49	
50	MOTOR END PLATE BHM3	BIA-BHM3-6-50	
51	HEXANGONAL STUD BOLT BHM3	BIA-BHM3-6-51	
52	FAN BHM3	BIA-BHM3-6-52	
53	AXIAL SPRING COLLAR BHM3	BIA-BHM3-6-53	
54	FAN COVER BHM3	BIA-BHM3-6-54	
55	BOLT AND WASHER ASSEMBLY SCREWS BHM3	BIA-BHM3-6-55	
56	BASE FRAME BHM3	BIA-BHM3-6-56	
57	SPRING WASHER BHM3	BIA-BHM3-6-57	
58	HEX SCREW BHM3	BIA-BHM3-6-58	
59	DRAIN PLUG BHM3	BIA-BHM3-6-59	
	MOTOR ASSEMBLY BHM3-6	BIA-BHM3-6-MOTOR	

BHM5-4			
No	Description	Code	Use
1	DUST PROOF COVER BHM5	BIA-BHM5-4-1	
2	DRAIN PLUG BHM5	BIA-BHM5-4-2	
3	ORING D15 X 2.4 BHM5	BIA-BHM5-4-3	
4	HEX SCREW BHM5	BIA-BHM5-4-4	
5	CLAMP PLATE BHM5	BIA-BHM5-4-5	
6	PUMP CASING BHM5	BIA-BHM5-4-6	
7	ORING D116 X 4 BHM5	BIA-BHM5-4-7	
8	HEX NUT M8 BHM5	BIA-BHM5-4-8	
9	WASHER BHM5	BIA-BHM5-4-9	
10	FIX RING BHM5	BIA-BHM5-4-10	
11	PIMARY DIFFUSER BHM5	BIA-BHM5-4-11	
12	IMPELLER BHM5	BIA-BHM5-4-12	
13	DIFFUSER BHM5	BIA-BHM5-4-13	

No	Description	Code	Use
14	SHAFT SLEEVE BHM5	BIA-BHM5-4-14	
15	OUTLET SECTION BHM5	BIA-BHM5-4-15	
16	MECHANICAL SEAL BHM5	BIA-BHM5-4-16	USE BIA-BHM3-4-16
17	SEAL PLATE BHM5	BIA-BHM5-4-17	
18	WASHER BHM5	BIA-BHM5-4-18	
19	PUMP COVER BHM5	BIA-BHM5-4-19	
20	BEARING 6202 BHM5	BIA-BHM5-4-20	
21	ROTOR BHM5	BIA-BHM5-4-21	USE BIA-BHM5-4-MOTOR
22	BEARING 6201 BHM5	BIA-BHM5-4-22	
23	STATOR BHM5	BIA-BHM5-4-23	USE BIA-BHM5-4-MOTOR
24	MOTOR HOUSING BHM5	BIA-BHM5-4-24	USE BIA-BHM5-4-MOTOR
25	TERMINAL BOX PAD BHM5	BIA-BHM5-4-25	
26	JUNCTION BOX BHM5	BIA-BHM5-4-26	
27	SCREW M4 X 8 BHM5	BIA-BHM5-4-27	
28	CONNECTION POLE BHM5	BIA-BHM5-4-28	
29	LOCK WASHER BHM5	BIA-BHM5-4-29	
30	HEX NUT M8 BHM5	BIA-BHM5-4-30	
31	PLAIN WASHER BHM5	BIA-BHM5-4-31	
32	SCREW ST3.5 X 12 BHM5	BIA-BHM5-4-32	
33	CAPACITOR 10UF BHM5	BIA-BHM5-4-33	
34	CAPACITOR GLAND BHM5	BIA-BHM5-4-34	
35	ORING D120 X 2 BHM5	BIA-BHM5-4-35	
36	WIRING DIAGRAM BHM5	BIA-BHM5-4-36	
37	TERMINAL BOX COVER BHM5	BIA-BHM5-4-37	
38	SCREW ST3.5 X 12 BHM5	BIA-BHM5-4-38	
39	NAME LABEL BHM5	BIA-BHM5-4-39	
40	SCREW M5 X 12 BHM5	BIA-BHM5-4-40	
41	SPRING WASHER BHM5	BIA-BHM5-4-41	
42	WASHER BHM5	BIA-BHM5-4-42	
43	SCREW ST3.5X16 BHM5	BIA-BHM5-4-43	
44	CABLE GLAND BHM5	BIA-BHM5-4-44	
45	JUNCTION BOX NUT PLUG BHM5	BIA-BHM5-4-45	
46	JUNCTION BOX NUT BHM5	BIA-BHM5-4-46	
47	CABLE BHM5	BIA-BHM5-4-47	
48	THREE WAVE RING BHM5	BIA-BHM5-4-48	
49	ORING D32 X 2.65 BHM5	BIA-BHM5-4-49	
50	MOTOR END PLATE BHM5	BIA-BHM5-4-50	
51	HEXANGONAL STUD BOLT BHM5	BIA-BHM5-4-51	
52	FAN BHM5	BIA-BHM5-4-52	
53	AXIAL SPRING COLLAR BHM5	BIA-BHM5-4-53	
54	FAN COVER BHM5	BIA-BHM5-4-54	
55	BOLT AND WASHER ASSEMBLY SCREWS BHM5	BIA-BHM5-4-55	
56	BASE FRAME BHM5	BIA-BHM5-4-56	
57	SPRING WASHER BHM5	BIA-BHM5-4-57	
58	HEX SCREW BHM5	BIA-BHM5-4-58	
59	DRAIN PLUG BHM5	BIA-BHM5-4-59	
	MOTOR ASSEMBLY BHM5-4	BIA-BHM5-4-MOTOR	

BHM5-5

No	Description	Code	Use
1	DUST PROOF COVER BHM5	BIA-BHM5-5-1	USE BIA-BHM5-4-1
2	DRAIN PLUG BHM5	BIA-BHM5-5-2	USE BIA-BHM5-4-2
3	ORING D15 X 2.4 BHM5	BIA-BHM5-5-3	USE BIA-BHM5-4-3
4	HEX SCREW BHM5	BIA-BHM5-5-4	USE BIA-BHM5-4-4
5	CLAMP PLATE BHM5	BIA-BHM5-5-5	USE BIA-BHM5-4-5

No	Description	Code	Use
6	PUMP CASING BHM5	BIA-BHM5-5-6	USE BIA-BHM5-4-6
7	ORING D116 X 4 BHM5	BIA-BHM5-5-7	USE BIA-BHM5-4-7
8	HEX NUT M8 BHM5	BIA-BHM5-5-8	USE BIA-BHM5-4-8
9	WASHER BHM5	BIA-BHM5-5-9	USE BIA-BHM5-4-9
10	FIX RING BHM5	BIA-BHM5-5-10	USE BIA-BHM5-4-10
11	PIMARY DIFFUSER BHM5	BIA-BHM5-5-11	USE BIA-BHM5-4-11
12	IMPELLER BHM5	BIA-BHM5-5-12	USE BIA-BHM5-4-12
13	DIFFUSER BHM5	BIA-BHM5-5-13	USE BIA-BHM5-4-13
14	SHAFT SLEEVE BHM5	BIA-BHM5-5-14	USE BIA-BHM5-4-14
15	OUTLET SECTION BHM5	BIA-BHM5-5-15	USE BIA-BHM5-4-15
16	MECHANICAL SEAL BHM5	BIA-BHM5-5-16	USE BIA-BHM3-4-16
17	SEAL PLATE BHM5	BIA-BHM5-5-17	USE BIA-BHM5-4-17
18	WASHER BHM5	BIA-BHM5-5-18	USE BIA-BHM5-4-18
19	PUMP COVER BHM5	BIA-BHM5-5-19	USE BIA-BHM5-4-19
20	BEARING 6202 BHM5	BIA-BHM5-5-20	USE BIA-BHM5-4-20
21	ROTOR BHM5	BIA-BHM5-5-21	USE BIA-BHM5-6-MOTOR
22	BEARING 6201 BHM5	BIA-BHM5-5-22	USE BIA-BHM5-4-22
23	STATOR BHM5	BIA-BHM5-5-23	USE BIA-BHM5-6-MOTOR
24	MOTOR HOUSING BHM5	BIA-BHM5-5-24	USE BIA-BHM5-6-MOTOR
25	TERMINAL BOX PAD BHM5	BIA-BHM5-5-25	
26	JUNCTION BOX BHM5	BIA-BHM5-5-26	
27	SCREW M4 X 8 BHM5	BIA-BHM5-5-27	
28	CONNECTION POLE BHM5	BIA-BHM5-5-28	
29	LOCK WASHER BHM5	BIA-BHM5-5-29	
30	HEX NUT M8 BHM5	BIA-BHM5-5-30	
31	PLAIN WASHER BHM5	BIA-BHM5-5-31	
32	SCREW ST3.5 X 12 BHM5	BIA-BHM5-5-32	
33	CAPACITOR 10UF BHM5	BIA-BHM5-5-33	
34	CAPACITOR GLAND BHM5	BIA-BHM5-5-34	
35	ORING D120 X 2 BHM5	BIA-BHM5-5-35	
36	WIRING DIAGRAM BHM5	BIA-BHM5-5-36	
37	TERMINAL BOX COVER BHM5	BIA-BHM5-5-37	
38	SCREW ST3.5 X 12 BHM5	BIA-BHM5-5-38	
39	NAME LABEL BHM5	BIA-BHM5-5-39	
40	SCREW M5 X 12 BHM5	BIA-BHM5-5-40	
41	SPRING WASHER BHM5	BIA-BHM5-5-41	
42	WASHER BHM5	BIA-BHM5-5-42	
43	SCREW ST3.5X16 BHM5	BIA-BHM5-5-43	
44	CABLE GLAND BHM5	BIA-BHM5-5-44	
45	JUNCTION BOX NUT PLUG BHM5	BIA-BHM5-5-45	
46	JUNCTION BOX NUT BHM5	BIA-BHM5-5-46	
47	CABLE BHM5	BIA-BHM5-5-47	
48	THREE WAVE RING BHM5	BIA-BHM5-5-48	
49	ORING D32 X 2.65 BHM5	BIA-BHM5-5-49	
50	MOTOR END PLATE BHM5	BIA-BHM5-5-50	
51	HEXANGONAL STUD BOLT BHM5	BIA-BHM5-5-51	
52	FAN BHM5	BIA-BHM5-5-52	
53	AXIAL SPRING COLLAR BHM5	BIA-BHM5-5-53	
54	FAN COVER BHM5	BIA-BHM5-5-54	
55	BOLT AND WASHER ASSEMBLY SCREWS BHM5	BIA-BHM5-5-55	
56	BASE FRAME BHM5	BIA-BHM5-5-56	
57	SPRING WASHER BHM5	BIA-BHM5-5-57	
58	HEX SCREW BHM5	BIA-BHM5-5-58	
59	DRAIN PLUG BHM5	BIA-BHM5-5-59	
	MOTOR ASSEMBLY BHM 5-6	BIA-BHM5-5-MOTOR	BIA-BHM5-6-MOTOR