

Experts in water.

**DAVEY**

## APPLICATIONS

Suits Davey sump pump 0.75kW and above in the series:

- Single channel sewage (S)
- Single channel cutter (K)
- Grinder (G)
- Vortex (V)

## WHY CHOOSE

### Davey Slide Rail Kits?

#### Features and Benefits

- Slide rail kits come complete with all required fasteners and rubber seals, simply add rail pipes, lifting hardware (rope, cable or chain) and mounting fasteners (e.g.: Dynabolts, etc) to complete the installation.
- Automatic alignment of the pump discharge to the guide rail foot means easy installation and removal.
- Lifting points on rail guide and pump ensure that alignment of the connection and lifting / lowering is able to be completed accurately and easily.

#### Suitable Fluids

Clean, "grey water" or "black water" of neutral pH.

Some wear should be expected while pumping hard solids in suspension.

#### Installation Note

In order for the guide hook to engage correctly with duckfoot when the pump is installed the rails must be vertical, parallel and square with the duckfoot mounting. The guide support at the top of the rails must therefore be installed in such a way to ensure the rails and duckfoot are correctly aligned.

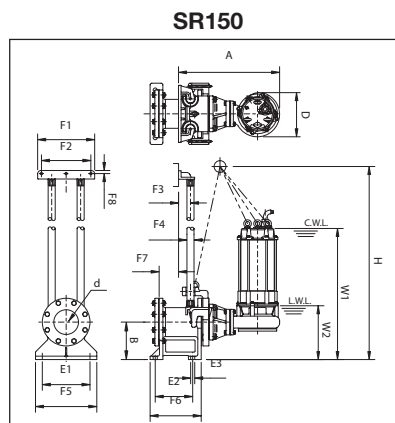
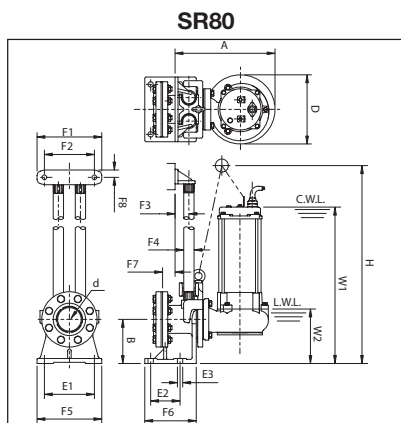
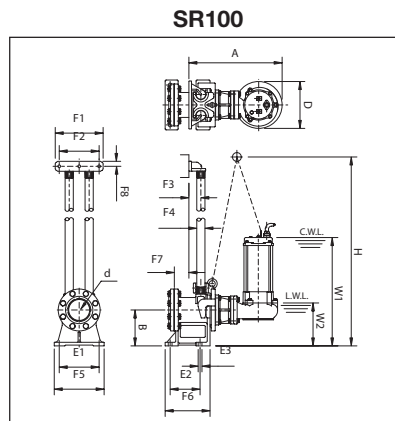
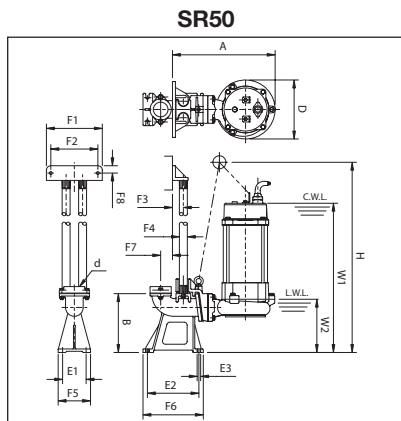


## Submersible Pumps Slide Rail Kits

Model Numbers: SR50, SR80, SR100, SR150

Slide rails allow for the easy installation and removal of sump pumps from pits, without the need to undo pipework or enter the pit.

## DIMENSIONS



Pump Type	Discharge Bore d	Rail Kit Model	Foundation			Guide Rail Fitting Section													Operating Water Level	
			E1	E2	E3	A	B	D	H	F1	F2	F3	F4	F5	F6	F7	F8	W1	W2	
D75 S/K	2"(50)	SR50	80	175	10	338	200	175	660	190	160	38	25A	110	205	40	25	500	185	
D150 S/K	3"(80)	SR80	170	100	18	322	165	198	680	225	170	50	32A	220	185	43	20	515	200	
DT08 S/K	2"(50)	SR50	80	175	10	338	200	175	600	190	160	38	25A	110	205	40	25	440	185	
DT15 S/K	3"(80)	SR80	170	100	18	322	165	198	630	225	170	50	32A	220	185	43	20	465	215	
DT22 S/K	3"(80)	SR80	170	100	18	357	165	218	695	225	170	50	32A	220	185	43	20	530	315	
DT37 S/K	3"(80)	SR80	200	150	19	493	180	223	775	240	200	60	40A	250	225	73	18	605	255	
DT55 S/K	4"(100)	SR100	200	150	19	442	180	265	825	240	200	60	40A	250	225	73	18	660	280	
DT75 S/K	4"(100)	SR100	200	150	19	442	180	265	935	240	200	60	40A	250	225	73	18	713	320	
D120G	2"(50)	SR50	80	175	10	330	200	170	675	190	150	38	25A	110	205	36	25	510	180	
D150G	2"(50)	SR50	80	175	10	330	200	170	735	190	150	38	25A	110	205	36	25	570	195	
DT12G	2"(50)	SR50	80	175	10	330	200	170	615	190	150	38	25A	110	205	36	25	450	180	
DT15G	2"(50)	SR50	80	175	10	330	200	170	655	190	150	38	25A	110	205	36	25	490	195	
DT22G	2"(50)	SR50	80	175	10	385	200	235	700	190	150	38	25A	110	205	36	25	535	195	
DT37G	2"(50)	SR50	80	175	10	385	200	235	715	190	150	38	25A	110	205	36	25	550	195	

## INSTALLATION AND PRIMING

Use a rope, cable or chain to position and retrieve the pump. Do not lower or retrieve the pump using the power lead as this may damage the cable entry seals, causing water leaks and unsafe operation.

Don't use this product for recirculating or filtering swimming pools, spas, etc. While these pumps are built to high safety standards, they are not approved for installations where people will be in the water while they are operating.

Don't pump abrasive materials. Sand and grit in the water being pumped will accelerate wear, causing shortened pump life.

Keep your pump clean, particularly in situations where lint, hair or fibrous materials may get bound around the pump shaft. Regular inspection and cleaning will extend pump life.

Make room for the float switch to operate. Automatic models have a float switch to turn them on when the water level rises and turn them off again when it has been pumped down to the safe operating level of the pump. If the float switch is not free to rise and fall, correct pump operation may not be possible.

Don't run your pump dry. Non-automatic models must be switched off manually or by way of an external float/level switch when the water level is reduced to the top of the pump housing.



[davey.com.au](http://davey.com.au) | [daveynz.co.nz](http://daveynz.co.nz)

This literature is not a complete guide to product usage. Further information is available from your Davey Dealer, Davey Support Centre and from the relevant product Installation and Operating Instructions. Must be read in conjunction with the relevant product Installation and Operating Instructions and all applicable statutory requirements. Product specifications may change without notice.  
 © Davey is a registered trademark of Davey Water Products Pty Ltd. © Davey Water Products Pty Ltd 2013.