



Company name: ASC Water Tanks
Created by: Anant Yuvarajah
Phone: 0414880162
Email: anant@asc tanks.com.au
Date: 15/06/2022

Qty. Description

1 UNILIFT KP.250.M.1



Note! Product picture may differ from actual product

Product No.: [012K4100](#)

Submersible drainage pump

Vertical single-stage stainless steel submersible pump with vertical discharge port and integrated submersible 1-phase canned motor in insulation class F with thermal overload protection.

The pump is fitted with a suction strainer, a carrying handle and is supplied with a 5 m mains cable.

The impeller is a semi-open impeller for 10 mm free passage suitable for pumping groundwater, surface water, rain water and similar liquids.

The pump has a double shaft seal consisting of two lip seals with grease in-between.

The pump has an outer casing ensuring continuous cooling of the motor by the pumped liquid. The rotor shaft operates in two maintenance-free carbon bearings cooled by the pumped liquid

The motor is filled with a non-toxic motor liquid.

Liquid:
Liquid temperature range: 0 .. 50 °C
Density: 998.2 kg/m³

Technical:
Maximum flow: 187 l/min
Max. Particle: 10 mm
Approvals: CE,RCM,LGABG,EAC,TUVRHWID

Materials:
Pump housing: Stainless steel
EN 1.4301
AISI 304
Impeller: Stainless steel
EN 1.4301
AISI 304

Installation:
Range of ambient temperature: 0 .. 50 °C



Company name: ASC Water Tanks
Created by: Anant Yuvarajah
Phone: 0414880162
Email: anant@asc tanks.com.au
Date: 15/06/2022

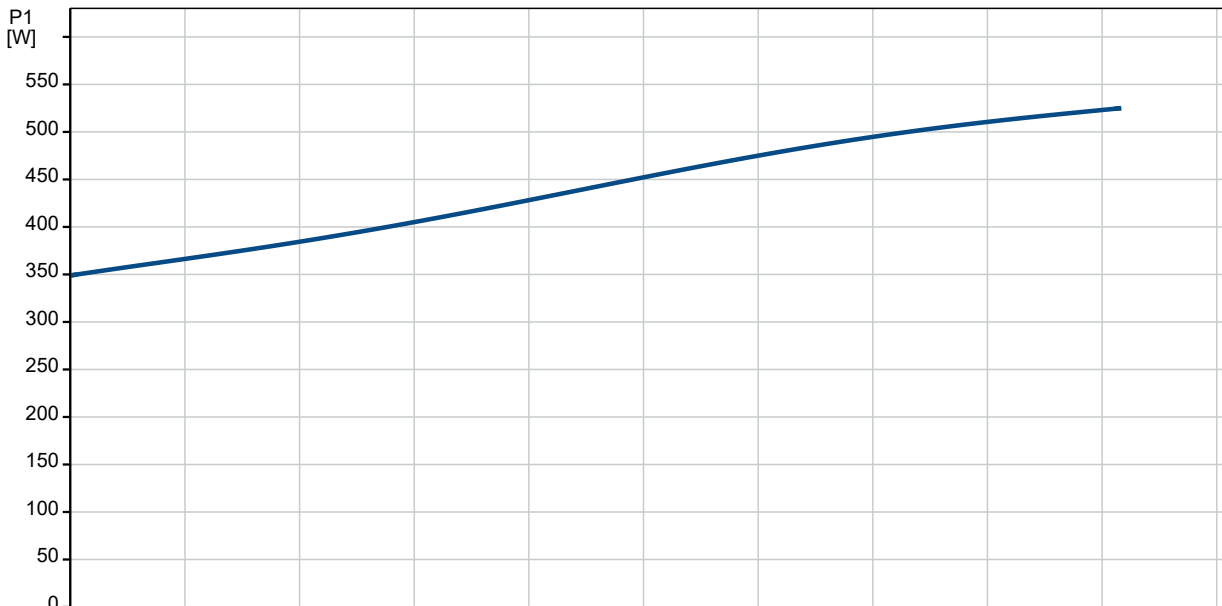
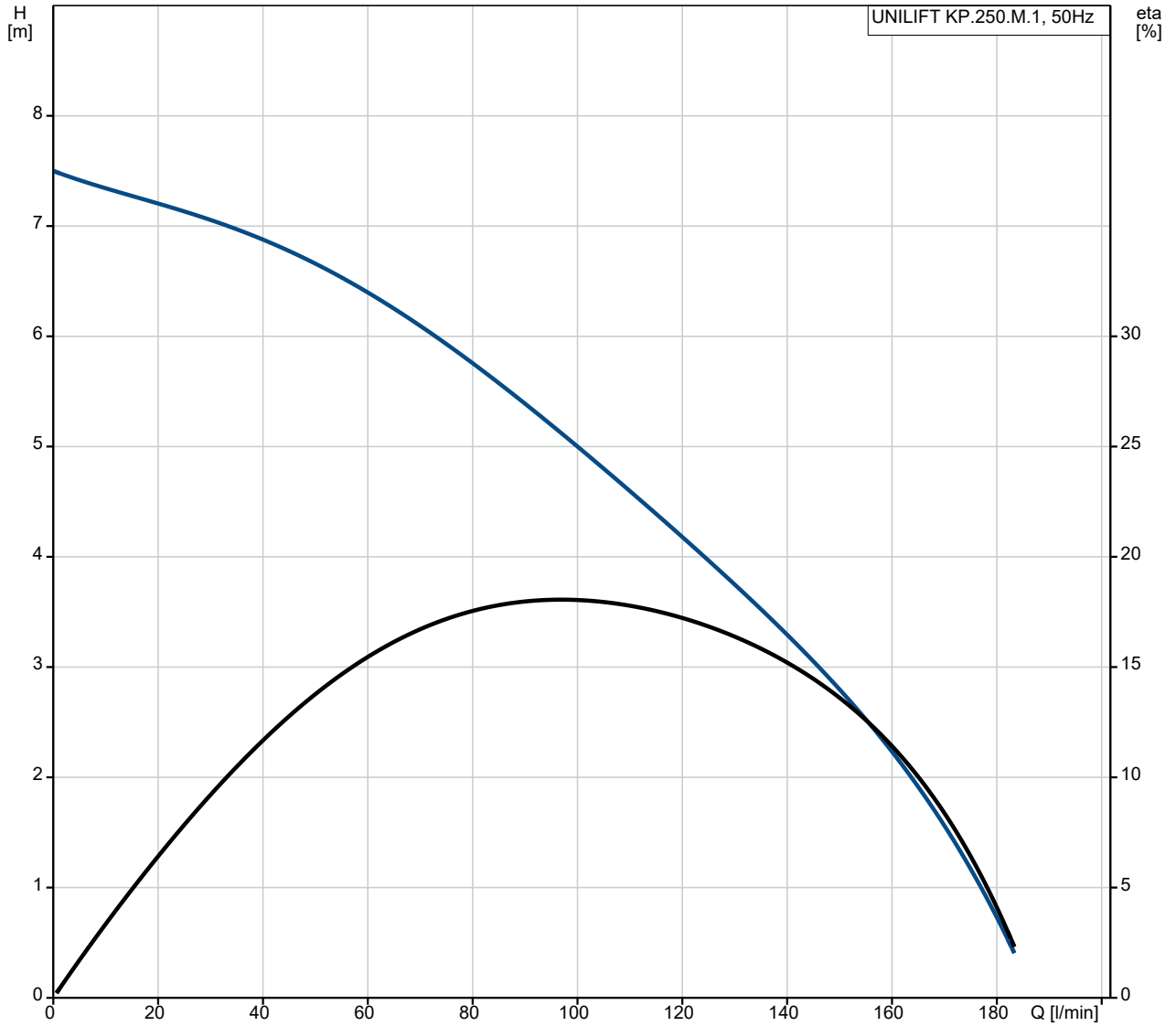
| Qty. | Description |
|------|-------------|
|------|-------------|

| | |
|-----------------------------|----------------------|
| Type of connection: | Rp |
| Size of connection: | 1 1/4 inch |
| Maximum installation depth: | 2 m |
| Electrical data: | |
| Power input - P1: | 480 W |
| Mains frequency: | 50 Hz |
| Rated voltage [V]: | 1 x 230-240 V |
| Rated current: | 2.2 A |
| Capacitor size - run: | 8 µF/400 V |
| Enclosure class (IEC 34-5): | IP68 |
| Insulation class (IEC 85): | F |
| Length of power cable: | 5 m |
| Type of cable plug: | AU |
| Others: | |
| Environmental approvals: | WEEE |
| Net weight: | 6.5 kg |
| Gross weight: | 6.8 kg |
| Shipping volume: | 0.013 m ³ |
| Country of origin: | DK |
| Custom tariff no.: | 8413709019182742 |



Company name: ASC Water Tanks
Created by: Anant Yuvarajah
Phone: 0414880162
Email: anant@asc tanks.com.au
Date: 15/06/2022

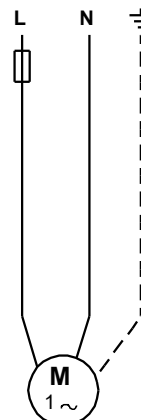
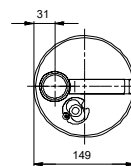
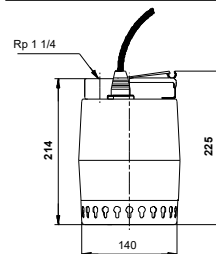
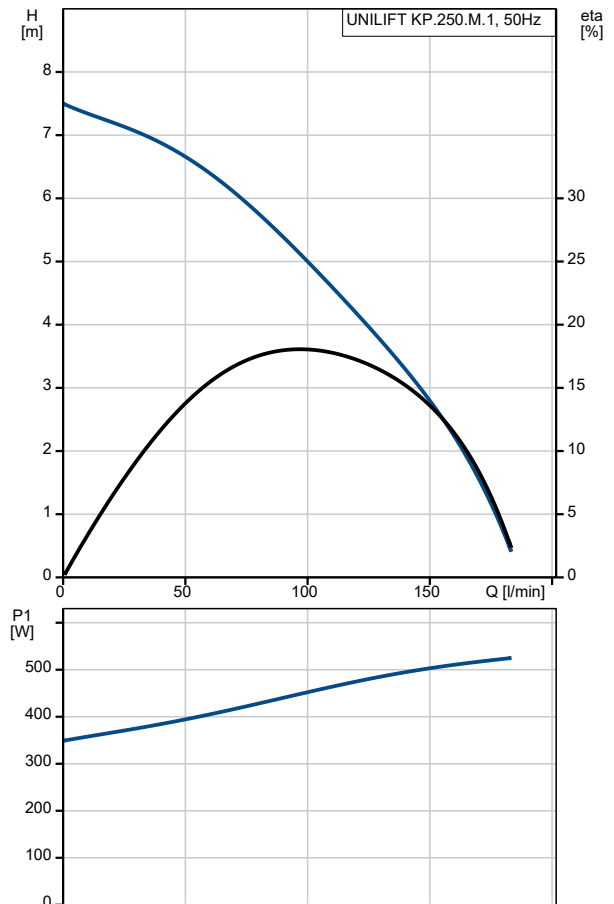
012K4100 UNILIFT KP.250.M.1 50 Hz





Company name: ASC Water Tanks
Created by: Anant Yuvarajah
Phone: 0414880162
Email: anant@asc tanks.com.au
Date: 15/06/2022

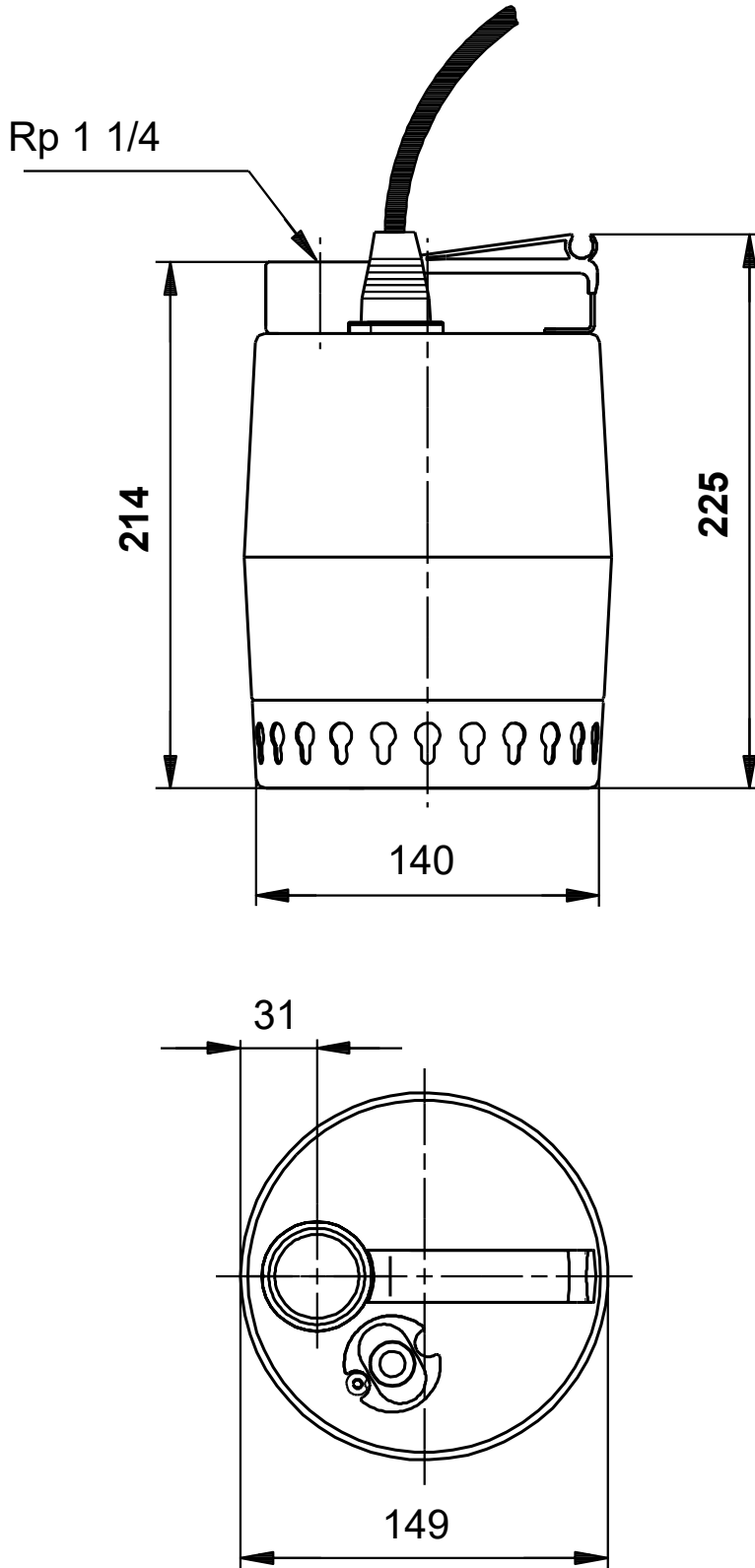
| Description | Value |
|-------------------------------|----------------------------|
| General information: | |
| Product name: | UNILIFT KP.250.M.1 |
| Product No: | 012K4100 |
| EAN number: | 5700391248726 |
| Price: | |
| Technical: | |
| Maximum flow: | 187 l/min |
| Maximum head: | 7.5 m |
| Max. Particle: | 10 mm |
| Approvals: | CE,RCM,LGABG,EAC,TUVRHWI D |
| Model: | A |
| Materials: | |
| Pump housing: | Stainless steel |
| Pump housing: | EN 1.4301 |
| Pump housing: | AISI 304 |
| Impeller: | Stainless steel |
| Impeller: | EN 1.4301 |
| Impeller: | AISI 304 |
| Installation: | |
| Range of ambient temperature: | 0 .. 50 °C |
| Type of connection: | Rp |
| Size of connection: | 1 1/4 inch |
| Maximum installation depth: | 2 m |
| Liquid: | |
| Liquid temperature range: | 0 .. 50 °C |
| Density: | 998.2 kg/m ³ |
| Electrical data: | |
| Power input - P1: | 480 W |
| Mains frequency: | 50 Hz |
| Rated voltage [V]: | 1 x 230-240 V |
| Rated current: | 2.2 A |
| Capacitor size - run: | 8 µF/400 V |
| Enclosure class (IEC 34-5): | IP68 |
| Insulation class (IEC 85): | F |
| Built-in motor protection: | CONTACT |
| Thermal protec: | internal |
| Length of power cable: | 5 m |
| Type of cable plug: | AU |
| Others: | |
| Environmental approvals: | WEEE |
| Net weight: | 6.5 kg |
| Gross weight: | 6.8 kg |
| Shipping volume: | 0.013 m ³ |
| Country of origin: | DK |
| Custom tariff no.: | 8413709019182742 |





Company name: ASC Water Tanks
Created by: Anant Yuvarajah
Phone: 0414880162
Email: anant@asc tanks.com.au
Date: 15/06/2022

012K4100 UNILIFT KP.250.M.1 50 Hz



Note! All units are in [mm] unless others are stated.
Disclaimer: This simplified dimensional drawing does not show all details.