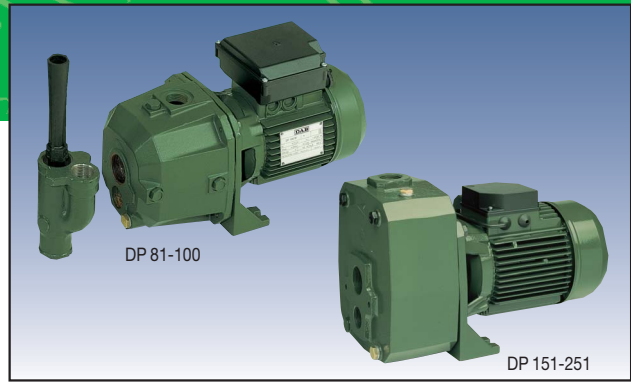


# DP FOR DEEP SUCTION



Self-priming centrifugal pump for suction up to 27 metres , reached by means of an ejector. Cast iron pump body and motor support. Technopolymer impeller and diffusers. Stainless steel adjustment rings.  
Carbon/ceramic mechanical seal.  
Cast iron ejector body, technopolymer Venturi tube and brass nozzle.  
Asynchronous motor closed and cooled by external ventilation.  
Built-in thermal and current overload protection and a capacitor permanently on in the single-phase version. For the protection of the three-phase motor it is advisable to use a suitable overload protection complying with the regulations in force.



**Operating range:** from 0.15 to 4.3 m<sup>3</sup>/h  
**Liquid temperature range:** from 0°C to +40°C for other uses  
from 0°C to +35°C for domestic use  
**Pumped liquid characteristics:** clean, free from solids or abrasive substances, not viscous, not aggressive, not crystallised and chemically neutral.  
**Maximum ambient temperature:** +40°C  
**Maximum working pressure:** 6 bar (600 kPa) for DP 80 - DP 100  
8 bar (800 kPa) for DP 151 - DP 251  
**Protection level:** IP 44  
**Insulation class:** F

## ELECTRICAL DATA

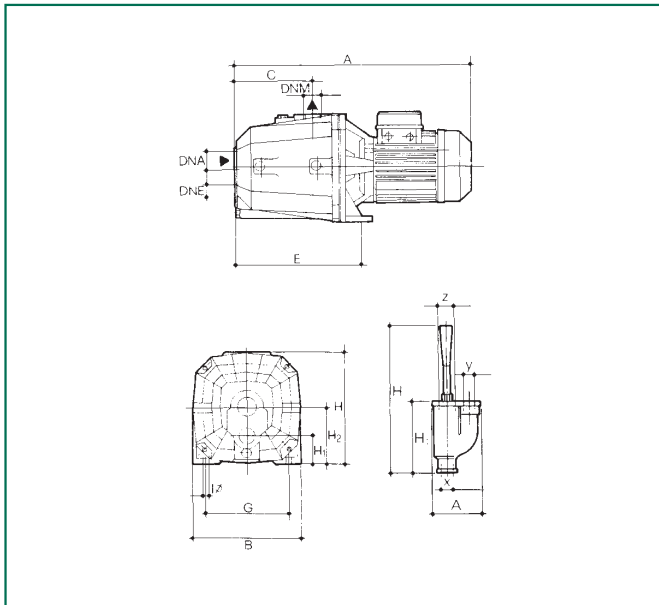
MODEL	ELECTRICAL DATA						
	VOLTAGE 50 Hz	P1 MAX kW	P2 NOMINAL kW HP		In A	CAPACITOR µF Vc	
DP 81 M	1x220-240 V ~	0,69	0,44	0,6	3,2	12,5	450
DP 81 T	3x230-400 V ~	0,66	0,44	0,6	2,6-1,5	-	-
DP 100 M	1x220-240 V ~	0,79	0,75	1	3,8	16	450
DP 100 T	3x230-400 V ~	0,64	0,75	1	2,6-1,5	-	-
DP 151 M	1x220-240 V ~	1,56	1,1	1,5	7	31,5	450
DP 151 T	3x230-400 V ~	1,45	1,1	1,5	4,7-2,7	-	-
DP 251 M	1x220-240 V ~	-	1,85	2,5	8,3	40	450
DP 251 T	3x230-400 V ~	-	1,85	2,5	5,6-3,2	-	-

## Performance range

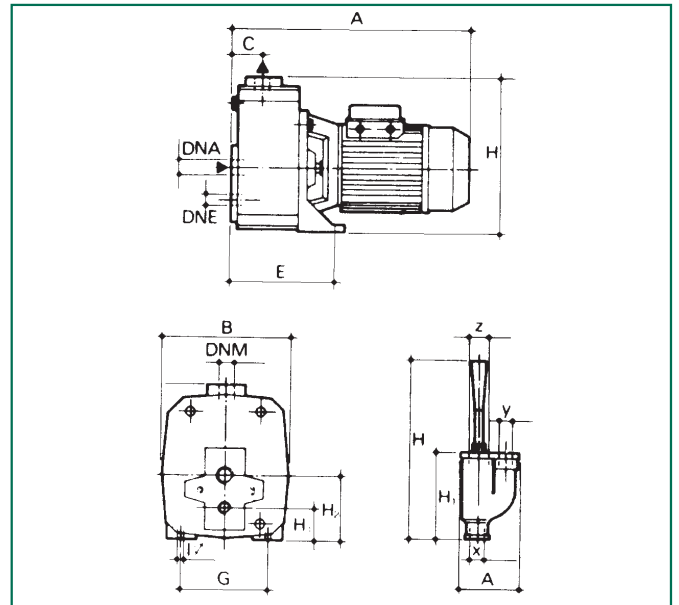
HYDRAULIC DATA (n = 2800 r.p.m.)														
PUMP TYPE	EJECTOR TYPE	SUCTION DEPTH	Delivery pressure in bar											
			1,5	2	2,5	3	3,5	4	4,5	5	5,5	6	6,5	7
Capacity table in l/h														
DP 81	E 25	9	2140	1410	730	-	-	-	-	-	-	-	-	-
		12	1730	1000	400	-	-	-	-	-	-	-	-	-
		15	1220	580	-	-	-	-	-	-	-	-	-	-
	E 30	9	1790	1340	950	620	360	-	-	-	-	-	-	-
		12	1500	1100	740	460	250	-	-	-	-	-	-	-
		15	1260	880	570	320	-	-	-	-	-	-	-	-
DP 100	E 25	9	2580	1870	1120	470	-	-	-	-	-	-	-	
		12	1990	1400	720	-	-	-	-	-	-	-	-	
		15	1400	950	380	-	-	-	-	-	-	-	-	
	E 30	12	1770	1350	980	650	400	-	-	-	-	-	-	
		15	1500	1120	775	500	280	-	-	-	-	-	-	
		18	1260	910	600	350	150	-	-	-	-	-	-	
DP 151	E 20	9	-	-	-	3470	2890	2220	1500	750	-	-	-	
		12	-	-	-	3110	2510	1850	1100	300	-	-	-	
		15	-	-	-	2710	2100	1380	640	-	-	-	-	
		18	-	-	-	2360	1700	950	-	-	-	-	-	
	E 25	15	-	-	-	2800	2330	1830	1350	900	520	-	-	
		18	-	-	-	2530	2050	1550	1090	680	300	-	-	
DP 251	E 20	21	-	-	-	1820	1650	1410	1160	910	700	520	-	
		24	-	-	-	1680	1520	1260	1020	780	580	420	-	
		27	-	-	-	1550	1360	1110	880	680	490	330	-	
		9	-	-	-	4300	3600	2900	2180	1400	640	-	-	
	E 25	12	-	-	-	3750	3140	2540	1700	940	-	-	-	
		15	-	-	-	-	2780	2040	1300	500	-	-	-	
18		-	-	-	-	2340	1610	820	-	-	-	-		
15		-	-	-	-	2920	2400	1900	1400	950	570	-		
E 30	18	-	-	-	-	2600	2110	1620	1150	720	360	-		
	21	-	-	-	-	2350	1850	1350	900	510	-	-		
	24	-	-	-	-	2050	1550	1080	660	300	-	-		
	21	-	-	-	-	-	1710	1480	1220	980	770	590		
E 30	24	-	-	-	-	-	1580	1330	1080	850	670	490		
	27	-	-	-	-	-	1440	1200	950	750	560	400		

## DIMENSIONS AND WEIGHTS

### DP 81-100

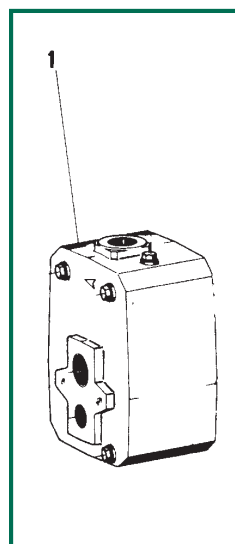
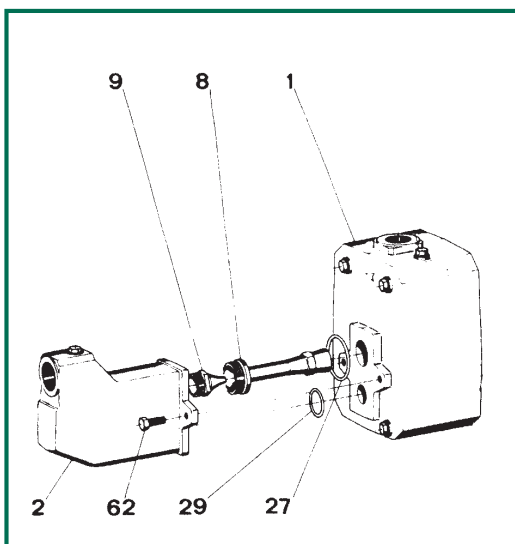


### DP 151-251 Convertible



MODEL	A	B	C	E	G	I Ø	H	H1	H2	DNA	DNM	DNE	EJECTOR						WEIGHT Kg
													A	H	H1	x	y	z	
DP 81	385	180	90	202	140	9,5	225	47	92	1 1/4" G	1" G	1" G	97	295	143	1" G	1" G	1 1/4" G	13
DP 100	385	180	90	202	140	9,5	225	47	92	1 1/4" G	1" G	1" G	97	295	143	1" G	1" G	1 1/4" G	15,7
DP 151	388	210	50	197	145	11	155	52	108	1 1/4" G	1" G	1" G	97	295	143	1" G	1" G	1 1/4" G	28
DP 251 M	462	210	50	197	145	11	155	53	108	1 1/4" G	1" G	1" G	97	295	143	1" G	1" G	1 1/4" G	32,5
DP 251 T	388	210	50	197	145	11	155	53	108	1 1/4" G	1" G	1" G	97	295	143	1" G	1" G	1 1/4" G	27,9

## INSTRUCTION FOR CONVERSION



**Conversion from DP 151-251 to JET 151-251**  
Screw the nozzle (9) into place on the ejector's body (2) and the Venturi tube (8). Put the O-rings (27) and (29) in their respective places and fix the ejector body (2) to the pump body (1) using the two screws (62).

**Conversion from JET 151-251 to DP 151-251**  
Loosen and remove the two screws (62) connecting the ejector body (2) to the pump body (1). Save the O-rings (27) and (29), the Venturi tube (8) and the nozzle (9).