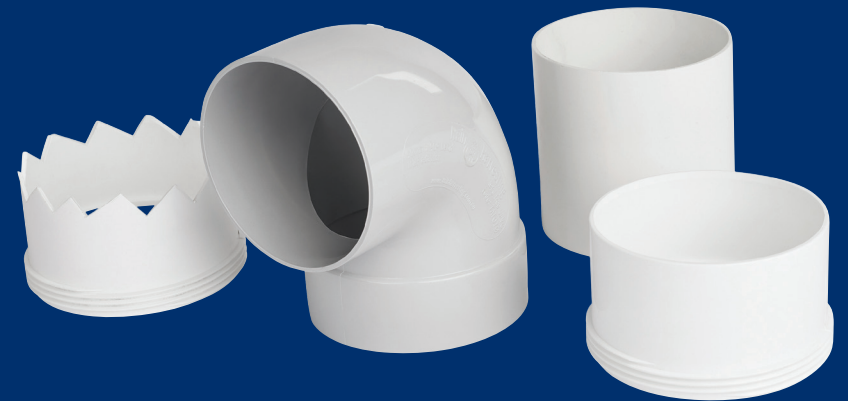


**RAIN HARVESTING**  
by Blue Mountain Co

**RAIN HARVESTING**  
by Blue Mountain Co

# Auto Tank Vacuum



## Installation and Specification Guide

### PRODUCT DETAILS

Automatically remove sediment from the bottom of your tank to improve your rainwater quality and reduce sediment resuspension.

**TAVK02** 90mm Concrete  
**TAVK03** 90mm Flat Wall

### FEATURES AND BENEFITS

- Clean the base of your tank without sacrificing stored water.
- Automatically vacuums the sediment off the bottom of the tank in the area of the outtake pipe every time the tank overflows
- Comes in kit form for easy installation

# Installation

## WHAT'S IN THE BOX?

- 1 x 90 degree flanged elbow with anti-syphon vent (Flat wall tanks only)
- 1 x 90 degree elbow with anti-syphon vent (concrete tanks only)
- 1 x 90mm threaded coupling (upper coupling)
- 1 x 90mm threaded coupling (bottom toothed coupling)
- 1 x 90mm male pipe (concrete tanks only)

## TOOLS/MATERIALS YOU MAY REQUIRE

- Marker pen
- Tape measure
- Saw
- Solvent weld glue
- Screwdriver
- Screws

## FLAT WALL TANK

1. Your Automatic Tank Vacuum can be installed in both empty rainwater tanks and tanks with water in them.
2. To determine the appropriate length for your tank vacuum pipe, put the 90 degree flanged elbow against your tank overflow outlet, place the toothed coupling at the base of your rainwater tank, and measure the distance between them.
3. Cut a length of 90mm UPVC pipe to match the measurement you took for the suction riser.
4. Apply solvent weld glue to the threaded socket of your toothed and plain coupling and both ends of the suction riser pipe then push together holding until the glue sets.
5. Using the 90 degree flanged elbow and the plain coupling end of the suction riser, apply solvent weld glue to both, push together and hold until the glue sets.
6. Remove the existing tank overflow outlet from your tank and clean around the flange contact surface.
7. Insert the assembled Automatic Tank Vacuum through the overflow hole, swinging it down into place once the elbow is through the hole.
8. Apply silicone to the flange and use screws to secure it to the tank.
9. You may wish to consider installing an insect-proof flap valve and Leaf Catcha or Air Gap at the outlet. This will prevent pests from entering your tank via the tank vacuum and will also complement the anti-syphon vent to further prevent syphoning.

## CONCRETE TANK

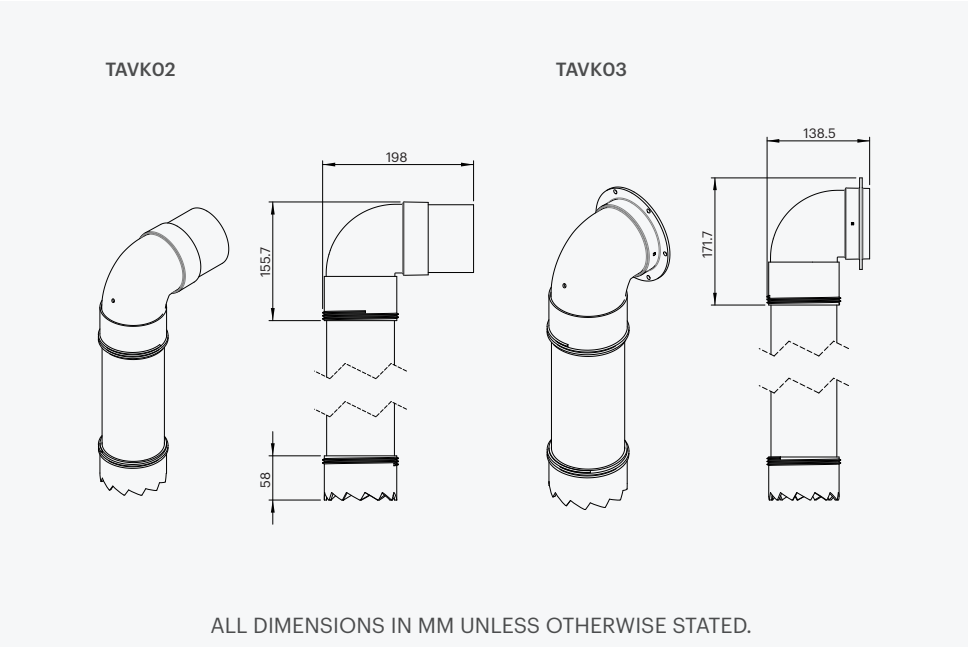
1. If you do not have an access hole above your tank overflow outlet, your Automatic Tank Vacuum will need to be installed from the inside of your tank, which must be empty. If this is the case, ask a licensed trade professional to install your tank vacuum.
2. Assemble the Automatic Tank Vacuum following Steps 2-5 outlined above. Please note that supplied in the 90mm Concrete kit will be a 90 degree plain elbow in lieu of the flange version.

3. Solvent weld glue the socket of the 90 degree elbow and assembled Automatic Tank Vacuum, to the 90mm pipe of your overflow outlet on the inside of your tank. If your tank overflow uses a socket overflow outlet, utilise the short section of 90mm pipe included in your kit and use solvent weld glue to install.
4. We recommend installing an insect-proof flap valve and Leaf Catcha or Air Gap at the pipe outlet. This will prevent pests from entering your tank via the tank vacuum and will also complement the anti-syphon vent to further prevent syphoning.

## MAINTENANCE

No maintenance is required. Your Automatic Tank Vacuum is designed to reduce maintenance as it sucks sediment-laden water from the bottom of your rainwater tank and expels it through the tank overflow.

## PRODUCT DIMENSIONS



DISCLAIMER This product specification is not a complete guide to product usage. Product specifications may change without notice. For more information visit [rainharvesting.com.au](http://rainharvesting.com.au). Keep this manual handy for future reference. © Rain Harvesting Pty Ltd.

## COMPLIANCE

- AS/NZS 4020:2005 - Testing of products for use in contact with drinking water