

GENERAL INFO

FILTRATION AND ULTRAVIOLET ALL-IN-ONE UNIT WITH REVERSIBLE COVER

Provides safe and bacteria-free water for your whole house.

Suited to small to large households, these systems are designed for both mains and rainwater supply. This unit can be installed from **left to right** or **right to left** depending on the installation requirements.

FEATURES & BENEFITS

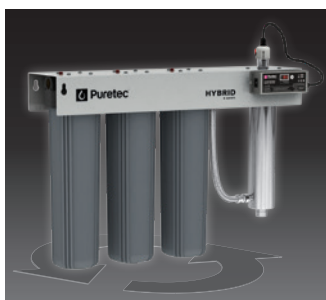
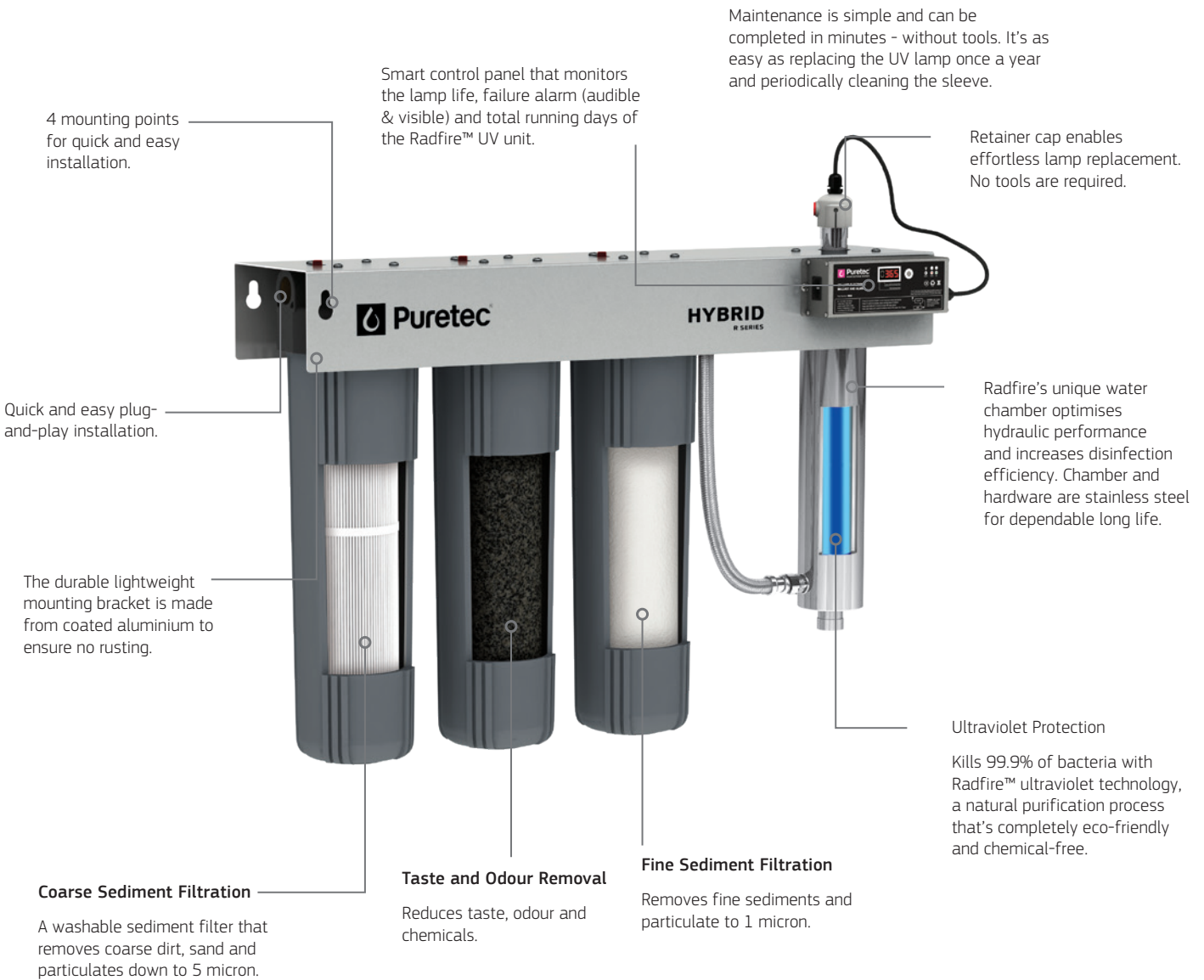
- Quick and easy plug-and-play installation.
- Reduces sediment, chemicals including chlorine, bad taste, odour and is highly effective in eliminating bacteria and parasites in your water.
- Reversible mounting bracket for easy installation. This unit can be installed from left to right or right to left depending on the installation requirements.
- Kills 99.99% of E. coli, Giardia and Cryptosporidium cysts with Radfire™ ultraviolet technology, a natural purification process that's completely eco-friendly and chemical free.
- Turns your tank and mains water into pure, safe, delicious drinking water.
- Filtration and ultraviolet all-in-one unit.
- Equipped with a lamp count-down timer and alarm.
- Anti-corrosion construction.



Ordering Code	HYBRID-R10	HYBRID-R11
Replacement parts and cartridges:		
Stage 1 filtration:	PLO5MP1	PLO5MP2
Stage 2 filtration:	CB05MP1	CB05MP2
Stage 3 filtration:	PX01MP1	PX01MP2
UV lamp, 46 W	RL6	RL6
Quartz sleeve:	RQS6	RQS6
Flow rate @40mJ/cm ² :	54 Lpm	54 Lpm
Flow rate @30mJ/cm ² :	70 Lpm	70 Lpm
Flow rate @16mJ/cm ² :	130 Lpm	130 Lpm
Connection:	1" BSP [25mm]	1" BSP [25mm]
Warranty:	3 years [^]	3 years [^]

Important Note: Use only genuine Puretec replacement cartridge. Flow rate @30mJ/cm² is the industry standard for drinking water.

DIAGRAM & FILTRATION TECHNOLOGY



Reversible Installation Option

This unit can be installed from left to right or right to left depending on the installation requirements.

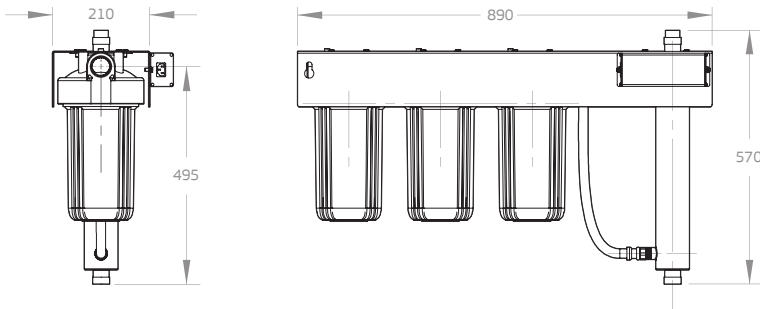


Triple Stage Filtration with UV Protection

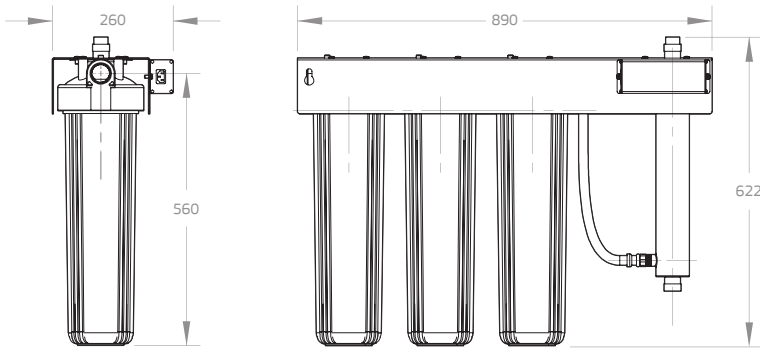
Incorporates an additional filtration stage for extra contaminant removal and capacity. Highly effective and efficient at removing dirt, rust, sediment, bad taste and odour in your water, providing good general purpose filtration.

PRODUCT DIMENSIONS Measurements in Millimeters (mm)

HYBRID R10



HYBRID R11



ADDITIONAL INFORMATION

Where the water being treated contains unusually high levels of dissolved solids particularly hard water, iron, manganese or biological organisms, a deposit build up on the quartz sleeve may occur over time. Maximum recommended parameters are as follows:

Iron:	less than 0.3 mg/L
Hydrogen Sulfide:	less than 0.05 mg/L
Suspended Solids:	less than 10mg/L
Manganese:	less than 0.05 mg/L
Hardness:	less than 110mg/L



WaterMark

WMTS103:2016
Licence No. WM 74593
Australian Certification Services

- Note:**
1. No claims can be made based on the specifications and images in this document. The design, technology, colours, features and prices are subject to change.
 2. This document and all its contents are copyright protected. All rights are reserved, particularly alteration, translation and reproduction using electronic systems.
 3. ^Warranties in this document cover parts for the period stated and include cover for parts and labour for the first year where applicable, subject to approval. Plus 2 years parts only. Our Water Filtration Specialists can provide you with advice to suit your needs.
 4. The Hybrid R Series needs to be installed where it is protected from the weather. For outside installations use the Hybrid G Series.