



**Company name:** ASC Water Tanks  
**Created by:** Anant Yuvarajah  
**Phone:** 0414880162  
**Email:** anant@asc tanks.com.au  
**Date:** 15/06/2022

**Qty. Description**

1 UNILIFT KP.350.AV.1



**Note! Product picture may differ from actual product**

Product No.: [013N4500](#)

Submersible drainage pump

Vertical single-stage stainless steel submersible pump with vertical discharge port and integrated submersible 1-phase canned motor in insulation class F with thermal overload protection.

The pump is fitted with suction strainer and a carrying handle and is supplied with a 5 m mains cable and vertical level switch for automatic start and stop.

The impeller is a semi-open impeller for 10 mm free passage suitable for pumping groundwater, surface water, rain water and similar liquids.

The pump has a double shaft seal consisting of two lip seals with grease in-between.

The pump has an outer casing ensuring continuous cooling of the motor by the pumped liquid. The rotor shaft operates in two maintenance-free carbon bearings cooled by the pumped liquid

The motor is filled with a non-toxic motor liquid.

Liquid:

Liquid temperature range: 0 .. 40 °C

Density: 998.2 kg/m<sup>3</sup>

Technical:

Maximum flow: 233 l/min

Max. Particle: 10 mm

Approvals: CE,RCM,VDE,LGABG,EAC,TUVRHWID

Materials:

Pump housing: Stainless steel

EN 1.4301

AISI 304

Impeller:

Stainless steel

EN 1.4301

AISI 304

Installation:

Range of ambient temperature: 0 .. 50 °C



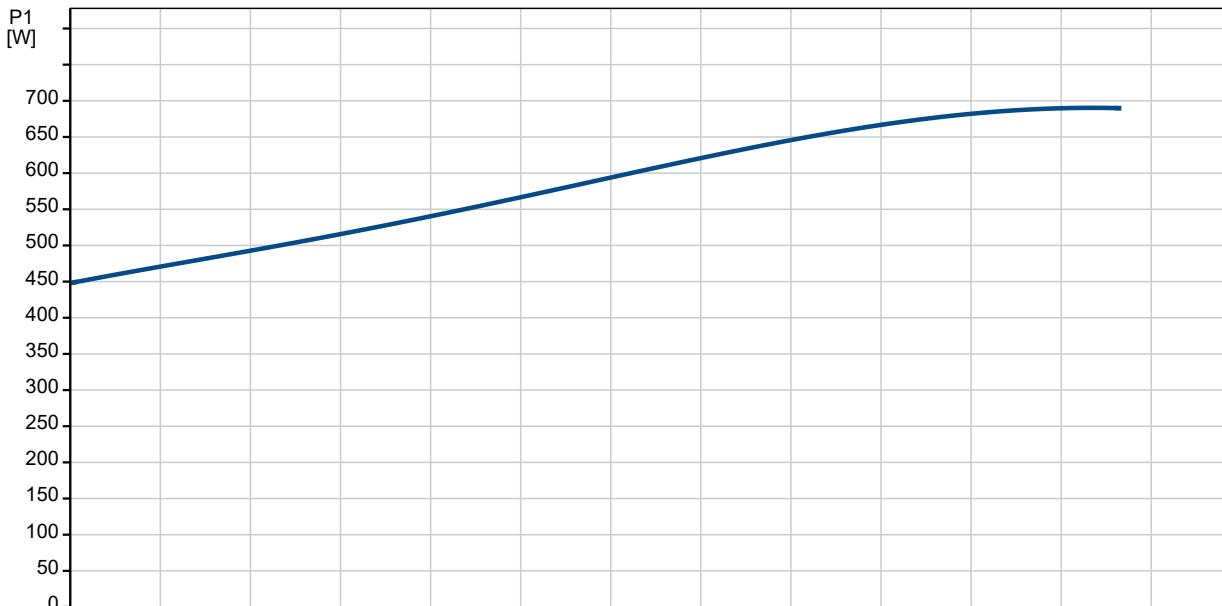
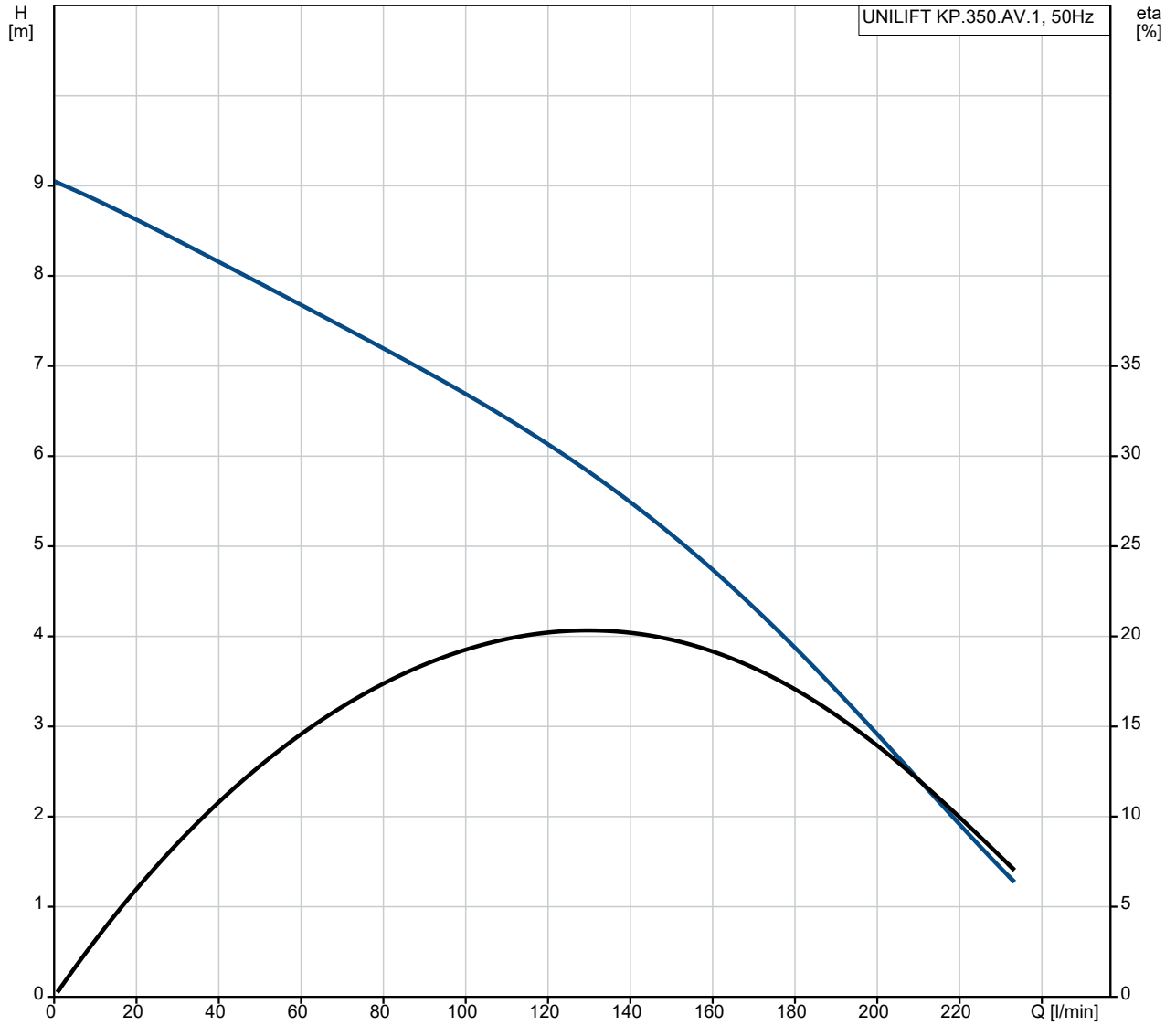
**Company name:** ASC Water Tanks  
**Created by:** Anant Yuvarajah  
**Phone:** 0414880162  
**Email:** anant@asc tanks.com.au  
**Date:** 15/06/2022

| Qty. | Description  |
|------|--|
|      | Type of connection: Rp<br>Size of connection: 1 1/4 inch<br>Maximum installation depth: 2 m  |
|      | Electrical data:<br>Power input - P1: 720 W<br>Mains frequency: 50 Hz<br>Rated voltage [V]: 1 x 220-240 V<br>Rated current: 3.2 A<br>Capacitor size - run: 10 µF/400 V<br>Enclosure class (IEC 34-5): IP68<br>Insulation class (IEC 85): F<br>Length of power cable: 5 m<br>Type of cable plug: AU |
|      | Others:<br>Environmental approvals: WEEE<br>Net weight: 7.5 kg<br>Gross weight: 8 kg<br>Shipping volume: 0.013 m <sup>3</sup><br>Country of origin: DK<br>Custom tariff no.: 8413709019182742  |



Company name: ASC Water Tanks  
Created by: Anant Yuvarajah  
Phone: 0414880162  
Email: anant@asc tanks.com.au  
Date: 15/06/2022

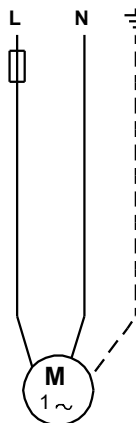
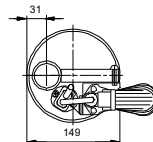
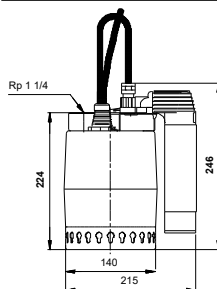
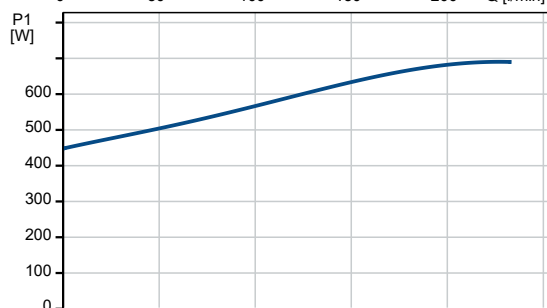
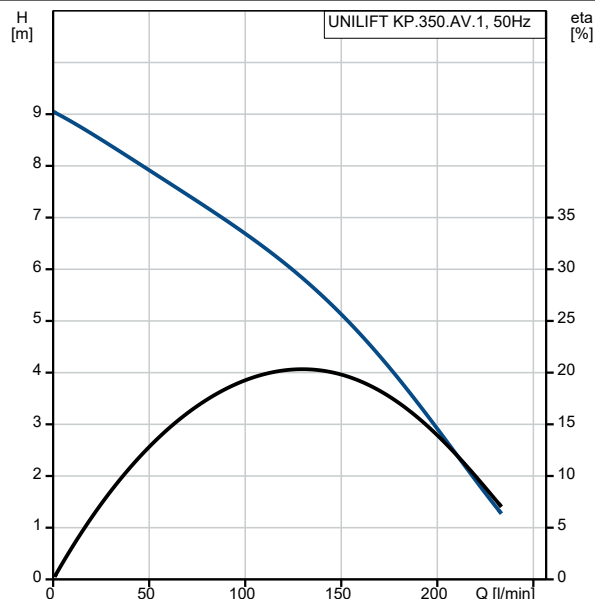
### 013N4500 UNILIFT KP.350.AV.1 50 Hz





**Company name:** ASC Water Tanks  
**Created by:** Anant Yuvarajah  
**Phone:** 0414880162  
**Email:** anant@asc tanks.com.au  
**Date:** 15/06/2022

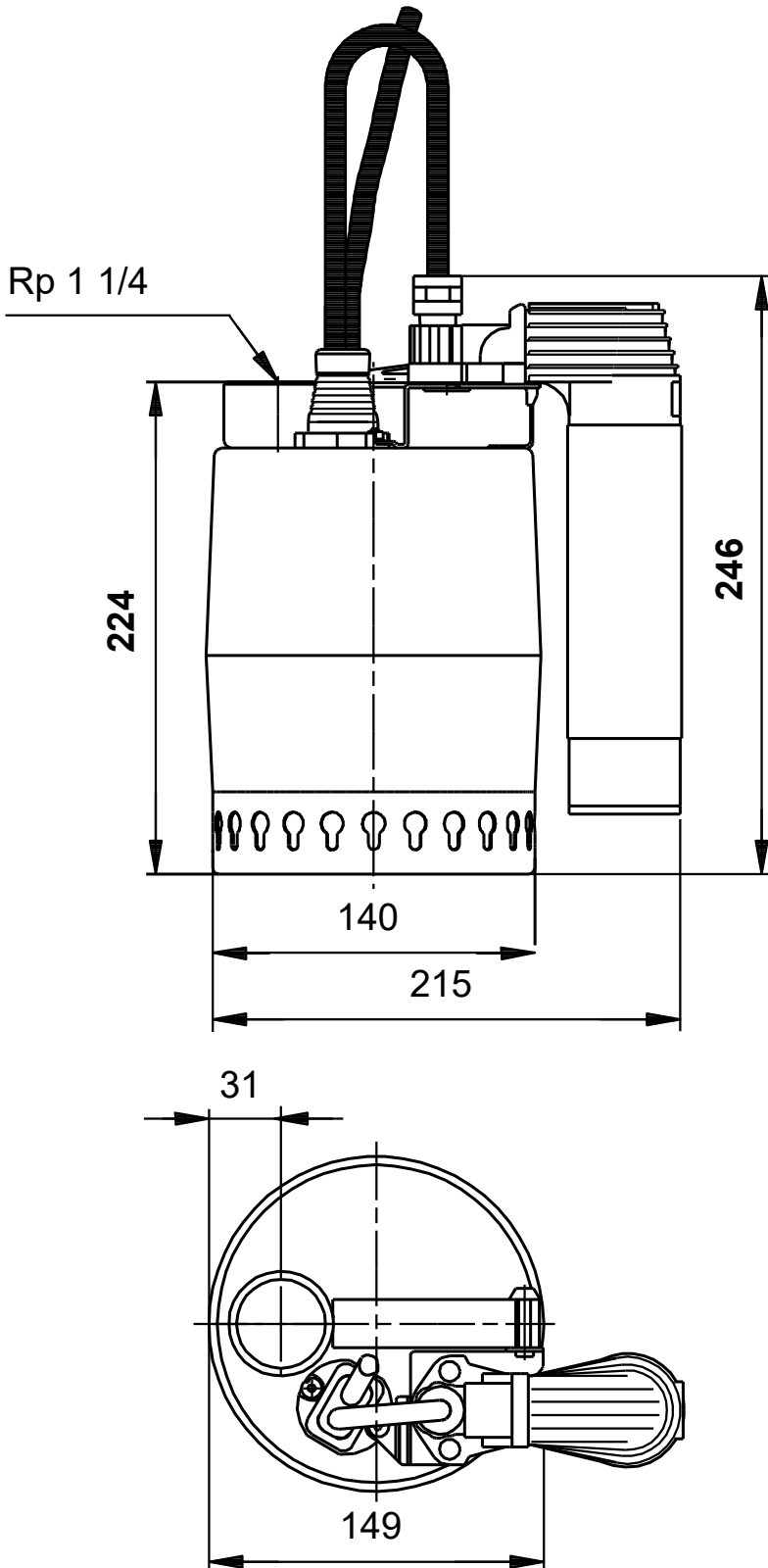
| Description                   | Value                          |
|-------------------------------|--------------------------------|
| <b>General information:</b>   |                                |
| Product name:                 | UNILIFT KP.350.AV.1            |
| Product No:                   | 013N4500                       |
| EAN number:                   | 5700393536647                  |
| Price:                        |                                |
| <b>Technical:</b>             |                                |
| Maximum flow:                 | 233 l/min                      |
| Maximum head:                 | 9 m                            |
| Max. Particle:                | 10 mm                          |
| Approvals:                    | CE,RCM,VDE,LGABG,EAC,TUV RHWID |
| Model:                        | A                              |
| <b>Materials:</b>             |                                |
| Pump housing:                 | Stainless steel                |
| Pump housing:                 | EN 1.4301                      |
| Pump housing:                 | AISI 304                       |
| Impeller:                     | Stainless steel                |
| Impeller:                     | EN 1.4301                      |
| Impeller:                     | AISI 304                       |
| <b>Installation:</b>          |                                |
| Range of ambient temperature: | 0 .. 50 °C                     |
| Type of connection:           | Rp                             |
| Size of connection:           | 1 1/4 inch                     |
| Maximum installation depth:   | 2 m                            |
| <b>Liquid:</b>                |                                |
| Liquid temperature range:     | 0 .. 40 °C                     |
| Density:                      | 998.2 kg/m <sup>3</sup>        |
| <b>Electrical data:</b>       |                                |
| Power input - P1:             | 720 W                          |
| Mains frequency:              | 50 Hz                          |
| Rated voltage [V]:            | 1 x 220-240 V                  |
| Rated current:                | 3.2 A                          |
| Capacitor size - run:         | 10 µF/400 V                    |
| Enclosure class (IEC 34-5):   | IP68                           |
| Insulation class (IEC 85):    | F                              |
| Built-in motor protection:    | CONTACT                        |
| Thermal protec:               | internal                       |
| Length of power cable:        | 5 m                            |
| Type of cable plug:           | AU                             |
| <b>Controls:</b>              |                                |
| Level switch:                 | vertical level switch          |
| <b>Others:</b>                |                                |
| Environmental approvals:      | WEEE                           |
| Net weight:                   | 7.5 kg                         |
| Gross weight:                 | 8 kg                           |
| Shipping volume:              | 0.013 m <sup>3</sup>           |
| Country of origin:            | DK                             |
| Custom tariff no.:            | 8413709019182742               |





Company name: ASC Water Tanks  
Created by: Anant Yuvarajah  
Phone: 0414880162  
Email: anant@asc tanks.com.au  
Date: 15/06/2022

### 013N4500 UNILIFT KP.350.AV.1 50 Hz



Note! All units are in [mm] unless others are stated.  
Disclaimer: This simplified dimensional drawing does not show all details.