

**Qty. Description**

1 UPS 32-80 180



Note! Product picture may differ from actual product

Product No.: [95906442](#)

The pump is of the canned rotor type, i.e. pump and motor form an integral unit without shaft seal and with only two gaskets for sealing.

The bearings are lubricated by the pumped liquid.

The pump has 3-step speed selector.

The pump is characterized by:

- \* Ceramic shaft and radial bearings.
- \* Carbon axial bearing.
- \* Stainless steel rotor can and bearing plate.
- \* Corrosion-resistant impeller, Composite.
- \* Cast iron pump housing.

The motor is a 1-phase motor.

No additional motor protection is required.

**Liquid:**

Pumped liquid: Water  
 Liquid temperature range: -25 .. 110 °C  
 Selected liquid temperature: 60 °C  
 Density: 983.2 kg/m<sup>3</sup>

**Technical:**

Rated flow: 5.16 m<sup>3</sup>/h  
 Rated head: 5.21 m  
 TF class: 110  
 Approvals: AAA,EAC,RCM

**Materials:**

Pump housing: Cast iron  
 EN 1561 EN-GJL-150  
 ASTM 30 B  
 Impeller: Composite  
 PES+30% GF

**Installation:**

Range of ambient temperature: 0 .. 40 °C  
 Maximum operating pressure: 10 bar  
 Type of connection: G  
 Size of connection: 2 inch  
 Pressure rating for connection: PN 10  
 Port-to-port length: 180 mm

**Electrical data:**

Power input in speed 1: 135 W  
 Power input in speed 2: 200 W



**Company name:** ASC Water Tanks  
**Created by:** Anant Yuvarajah  
**Phone:** 03 8795 7715  
**Email:** sales@asc tanks.com.au  
**Date:** 13/06/2024

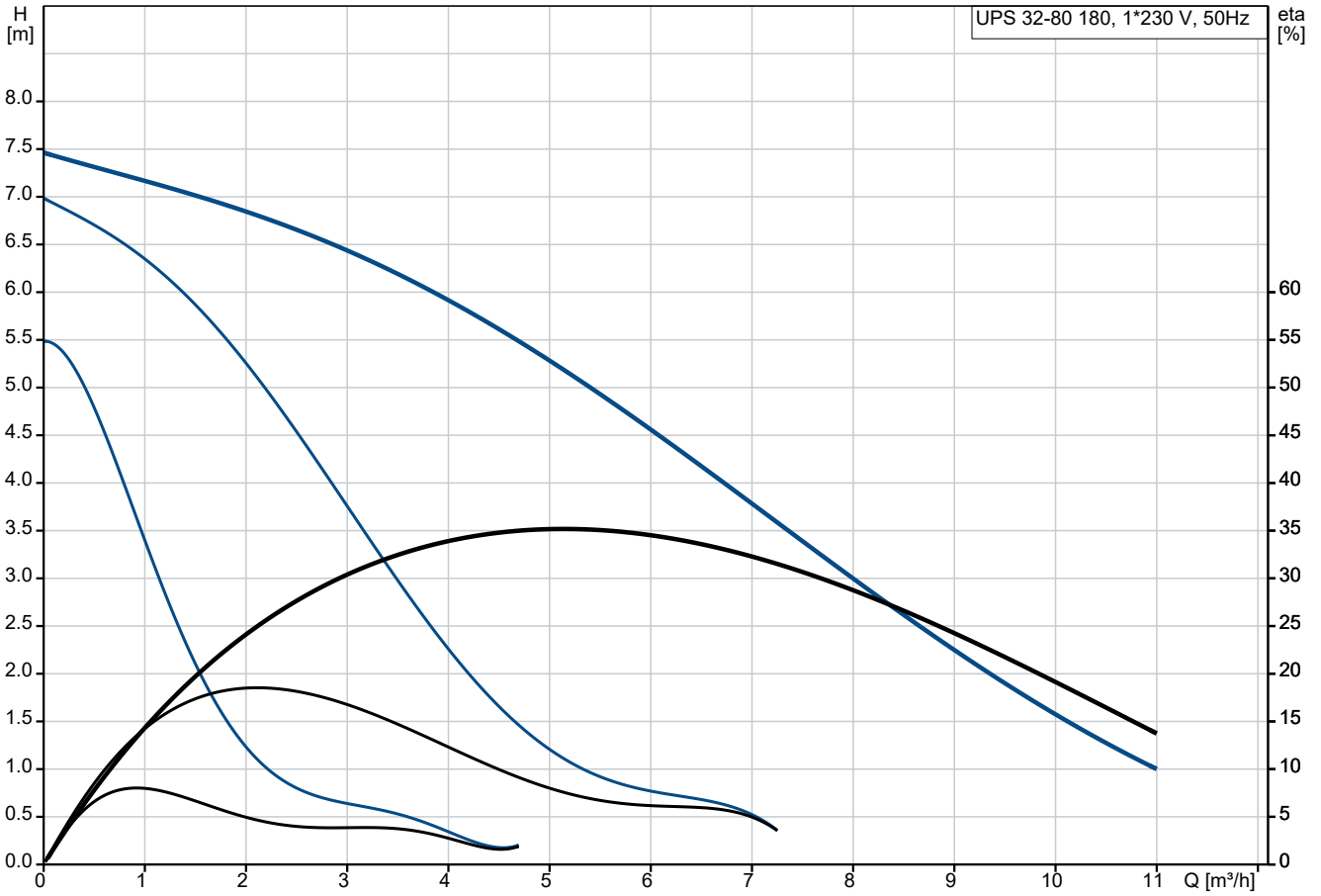
**Qty. Description**

|   |                             |                      |
|---|-----------------------------|----------------------|
| 1 | Max. power input:           | 220 W                |
|   | Mains frequency:            | 50 Hz                |
|   | Rated voltage:              | 1 x 230 V            |
|   | Current in speed 1:         | 0.6 A                |
|   | Current in speed 2:         | 0.9 A                |
|   | Current in speed 3:         | 0.98 A               |
|   | Capacitor size - run:       | 4 µF                 |
|   | Enclosure class (IEC 34-5): | X2D                  |
|   | Insulation class (IEC 85):  | F                    |
|   | Built-in motor protection:  | CONTACT              |
|   | Others:                     |                      |
|   | Terminal box position:      | 9H                   |
|   | Net weight:                 | 4.57 kg              |
|   | Gross weight:               | 4.85 kg              |
|   | Shipping volume:            | 0.008 m <sup>3</sup> |
|   | Country of origin:          | DK                   |
|   | Custom tariff no.:          | 84137090622081967    |

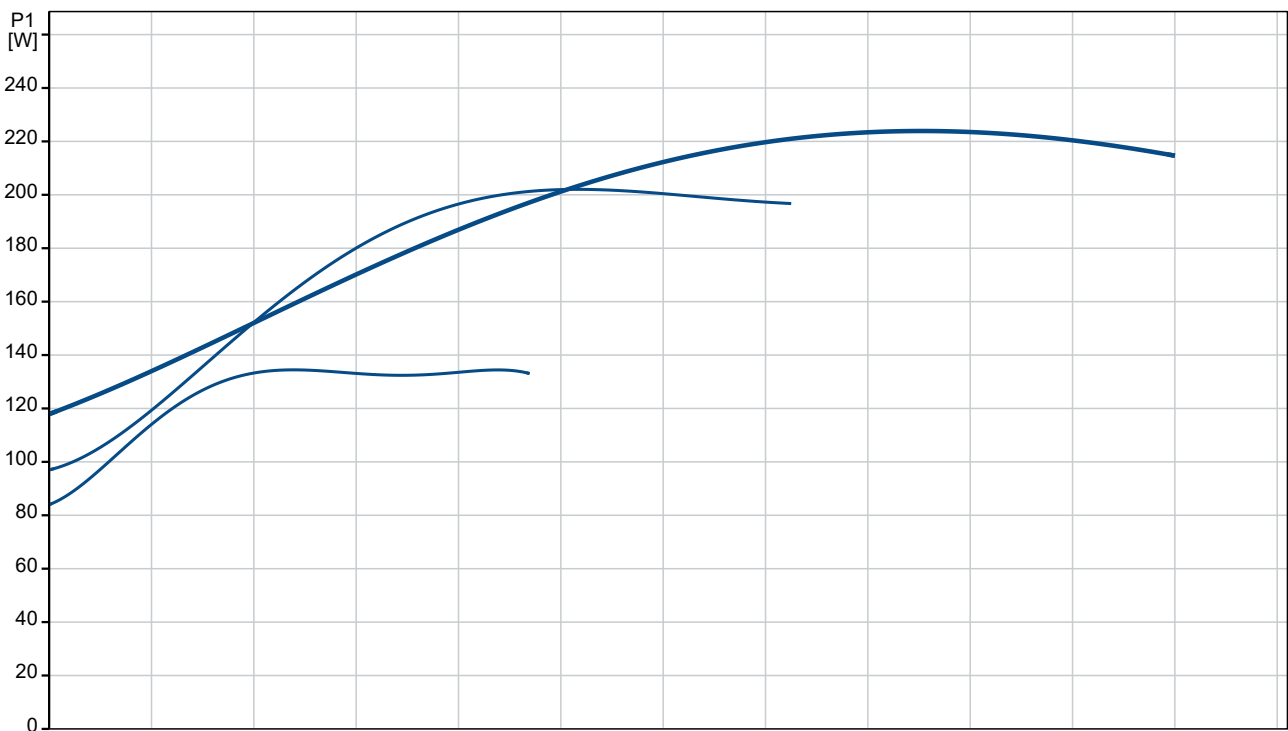


Company name: ASC Water Tanks  
Created by: Anant Yuvarajah  
Phone: 03 8795 7715  
Email: sales@asc tanks.com.au  
Date: 13/06/2024

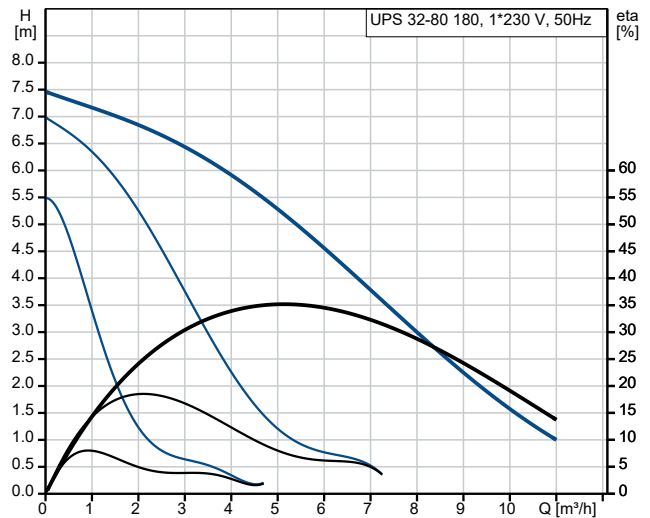
### 95906442 UPS 32-80 180 50 Hz



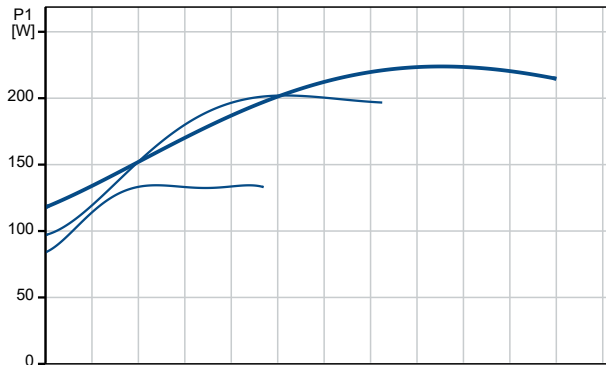
Pumped liquid = Water  
Liquid temperature during operation = 60 °C  
Density = 983.2 kg/m³



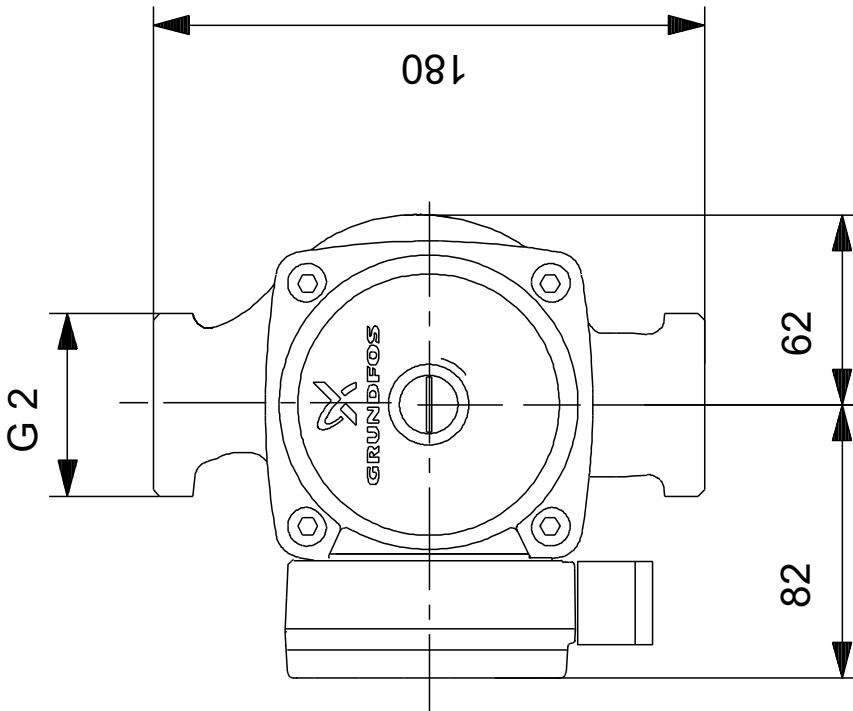
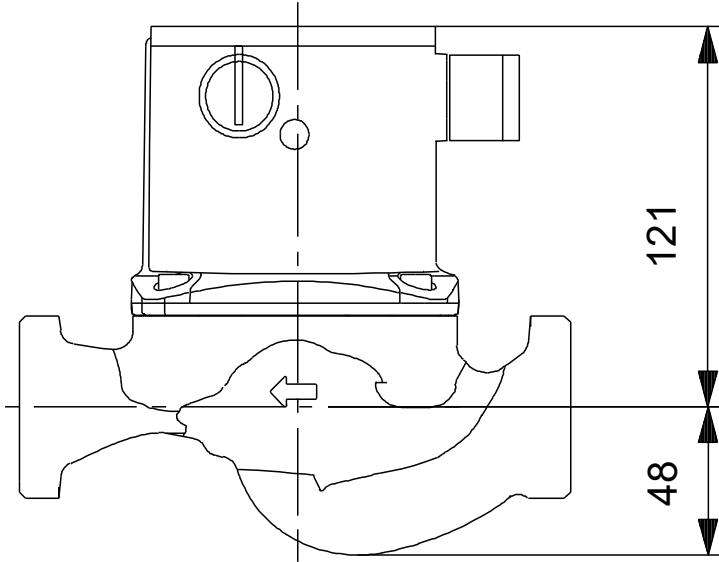
| Description                     | Value                    |
|---------------------------------|--------------------------|
| <b>General information:</b>     |                          |
| Product name:                   | UPS 32-80 180            |
| Product No:                     | <a href="#">95906442</a> |
| EAN number:                     | 5700312206101            |
| Price:                          | AUD 1204                 |
| <b>Technical:</b>               |                          |
| Speed no:                       | 3                        |
| Rated flow:                     | 5.16 m <sup>3</sup> /h   |
| Rated head:                     | 5.21 m                   |
| Maximum head:                   | 80 dm                    |
| TF class:                       | 110                      |
| Approvals:                      | AAA,EAC,RCM              |
| <b>Materials:</b>               |                          |
| Pump housing:                   | Cast iron                |
| Pump housing:                   | EN 1561 EN-GJL-150       |
| Pump housing:                   | ASTM 30 B                |
| Impeller:                       | Composite                |
| Impeller:                       | PES+30% GF               |
| <b>Installation:</b>            |                          |
| Range of ambient temperature:   | 0 .. 40 °C               |
| Maximum operating pressure:     | 10 bar                   |
| Type of connection:             | G                        |
| Size of connection:             | 2 inch                   |
| Pressure rating for connection: | PN 10                    |
| Port-to-port length:            | 180 mm                   |
| <b>Liquid:</b>                  |                          |
| Pumped liquid:                  | Water                    |
| Liquid temperature range:       | -25 .. 110 °C            |
| Selected liquid temperature:    | 60 °C                    |
| Density:                        | 983.2 kg/m <sup>3</sup>  |
| <b>Electrical data:</b>         |                          |
| Power input in speed 1:         | 135 W                    |
| Power input in speed 2:         | 200 W                    |
| Max. power input:               | 220 W                    |
| Mains frequency:                | 50 Hz                    |
| Rated voltage:                  | 1 x 230 V                |
| Current in speed 1:             | 0.6 A                    |
| Current in speed 2:             | 0.9 A                    |
| Current in speed 3:             | 0.98 A                   |
| Capacitor size - run:           | 4 µF                     |
| Enclosure class (IEC 34-5):     | X2D                      |
| Insulation class (IEC 85):      | F                        |
| Built-in motor protection:      | CONTACT                  |
| Thermal protec:                 | INT.                     |
| <b>Others:</b>                  |                          |
| Terminal box position:          | 9H                       |
| Net weight:                     | 4.57 kg                  |
| Gross weight:                   | 4.85 kg                  |
| Shipping volume:                | 0.008 m <sup>3</sup>     |
| Country of origin:              | DK                       |
| Custom tariff no.:              | 84137090622081967        |



Pumped liquid = Water  
 Liquid temperature during operation = 60 °C  
 Density = 983.2 kg/m<sup>3</sup>



## 95906442 UPS 32-80 180 50 Hz



Note! All units are in [mm] unless others are stated.  
Disclaimer: This simplified dimensional drawing does not show all details.