

# Designed with you in mind.

Our new Pump Stations are fully pre-plumbed and ready to go.



## WE'VE GOT YOUR BACK

Our lightweight design takes the pressure off.

## LOCAL SUPPORT

We offer fast, bang-on service so you can get on with it.

## KNOCK OFF SOONER

Our ribbed barrel design self-anchors into the ground without needing concrete.

## PRE-PLUMBED

Fully pre-assembled complete with fittings, meaning no mucking around with installation.

Designed and certified to AS/NZS1546.1 standards

On behalf of Polymaster, I'm proud to introduce our new range of pump stations and pump wells.

Like all our products, this new range has been meticulously researched and designed around the needs of the people who use it. Our engineering team have created a ready-to-go product that is easy to lift and quick to install with no need for concrete – saving you hours of work.

Lightweight, manoeuvrable and self-anchoring, our pump wells also come as fully pre-assembled pump stations, complete with pump, pipework, fittings, and a high-level alarm. They come in three sizes, 700L, 1000L and 1300L, and two pump options, grey water or black water.

Designed with you in mind, we hope our new range makes your job easier and delivers the excellent results you've come to expect from Polymaster.

Regards,

**James Steele**  
Category Manager



# Pump Stations

Drainage pump for stormwater /grey water (Grinder pump for sewer /black water also available)

Pump is easily lifted out via the PVC without touching liquid

Completely pre-plumbed with Ball valve Swing check valve & Barrel union



# Pump Stations

Pre-installed stand with mount for:

- High level visual and audible liquid alarm
- Outdoor power point for electrical connectivity

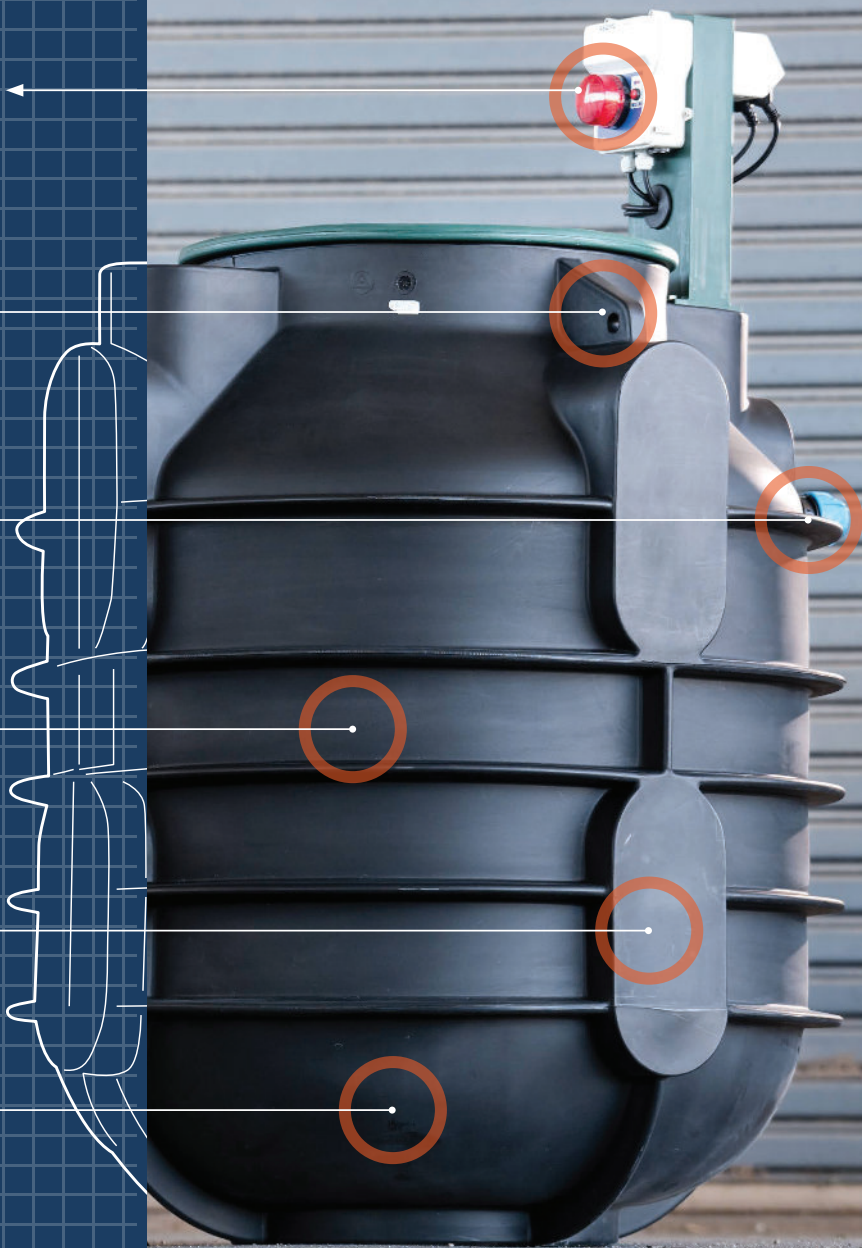
Lifting lugs

Brass fitting with 40mm Poly Pipe connector

Ribbing adds strength & creates self-anchoring tank

8 large flat spots around chamber to provide variable inlet positions

Tough rotationally moulded polyethylene vessel (Designed and certified to AS/NZS1546.1 standards)



CODE	DESCRIPTION	DIMENSIONS (mm)
PS700-STM	700 ltr Stormwater / Grey Water	1090 DIA x 1650H
PS700-SWR	700 ltr Sewer / Black Water	1091 DIA x 1650H
PS1000-STM	1000 ltr Stormwater / Grey Water	1092 DIA x 2030H
PS1000-SWR	1000 ltr Sewer / Black Water	1093 DIA x 2030H
PS1300-STM	1300 ltr Stormwater / Grey Water	1094 DIA x 2420H
PS1300-SWR	1300 ltr Sewer / Black Water	1095 DIA x 2420H

Scan for more details



# Pump Wells

Round / square lids available

- Optional riser
- Class D (heavy duty) lid available

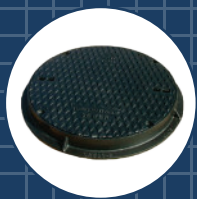
Lifting lugs

8 large flat spots around chamber to provide variable inlet positions

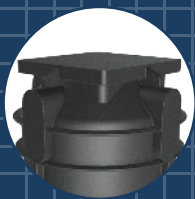
Tough rotationally moulded polyethylene vessel

Designed and certified to AS/NZS1546.1 standards

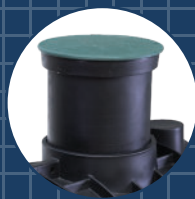
Flat base, perfect for pump to sit on



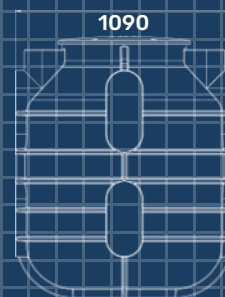
Class D Lid Available



Square Lids Available



Optional 500mm Riser Available



PW700-RND

CAPACITY (Litres)	TANK W/ ROUND LID	DIMENSIONS (mm)	TANK W/ SQUARE LID	DIMENSIONS (mm)
700	PW700-RND	1090 DIA x 1313H	PW700-SQR	1090 DIA x 1255H
1,000	PW1000-RND	1090 DIA x 1703H	PW1000-SQR	1090 DIA x 1645H
1,300	PW1300-RND	1090 DIA x 2093H	PW1300-SQR	1090 DIA x 2035H

Scan for more details



1800 062 064 | [polymaster.com.au](http://polymaster.com.au)