

Image illustrative only



PRODUCT INTRODUCTION

The Bianco NXT Summit Series Drive Controller Kits are an all-in-one solution designed to achieve advanced control, enhanced protection and optimal energy efficiency with the Bianco NXT range of Variable Frequency Drives.

Featuring the latest touch screen technology and an intuitive user friendly menu, these kits provide easy access to all the information you need.

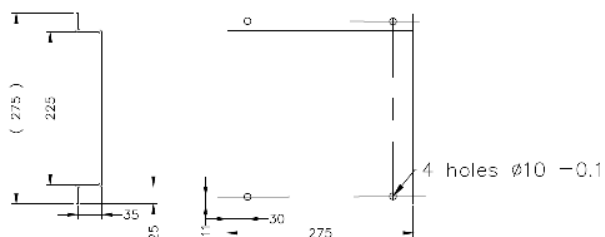
SUMMIT SERIES VMS solutions are designed for performance, reliability and ease of use.

PUMP TECHNICAL DATA

| | |
|--------------------------------|-----------------------------|
| RATED FLOW [M3/H] | 8m3/hr |
| MAX FLOW | 12m3/hr |
| MAX HEAD | 161.8M |
| OPTIMUM OPERATING RANGE | 4.8m3/hr @ 150.1m 44.2% eff |
| | 10m3/hr @ 127.7m 61.5% eff |
| WORKING AIR TEMP | 0°C - 40°C |
| LIQUID TEMPERATURE | -15°C - 120°C |
| HIGHEST EFFICIENCY | 64.2% |
| MAXIMUM PUMP PRESSURE | 33 bar |
| NET WEIGHT (KG) | 77.3kg |

INCLUDES

- Galvanised single pump base
- VMS Pump
- NXT Drive (Variable Frequency Drive)
- 4-20mA 16 bar Pressure Transducer
- Stainless Steel Counter Flanges
- Gaskets to suit Counter Flanges
- Watermarked Spring Check Valve
- Manifold (304 Stainless Steel)
- 30 Bar Liquid Filled Pressure Gauge
- Outlet side SS Isolation Valve
- BPT18 25 bar rated Pressure Tank with 304 SS 25mm isolating valve



Base 275 x 275mm x 35mm high

| | |
|-----------------------------|----------------------------|
| RATED VOLTAGE | Three phase 415V +10% - 6% |
| RATED CURRENT | 11.8 amps |
| POWER (KW) | 5.5kW 2 pole |
| MOTOR IP RATING | IP55 |
| MOTOR INSULATION | Class F |
| MOTOR EFFICIENCY STD | I.E.3 |
| MOTOR EFFICIENCY | 88.2% |
| COS Ø | 0.88 |
| MECHANICAL SEAL | AS-L-16 |
| OUTLET DIN FLANGE | DN40 |

BIA-NXT-DRIVE3-55



PRODUCT DETAILS

The NXT DRIVE Series are a range of pump-specific Variable Frequency Drives designed for the Australasian market with both the end-user and the technician in mind.

Featuring a full colour touch screen interface for clear concise system information, fault codes and protection notices with a handy setup wizard so you're always in control. NXT DRIVE is both simple to set up and to use.

Perfect for achieving onstant pressure management of a single pump with advanced control, enhanced protection and optimal energy efficiency

FEATURES

- Control and protect pumps up to 5.5 kW (13.0 amps)
- Variable frequency control to achieve constant pressure control
- Minimise wasted energy and reduce the need for large pressure tanks
- 'Soft-start' with low motor start current
- Flow, pressure and current protections
- RS485 comms
- 25 plain language fault messages
- Provides protection from; dry run, high and low voltage, input and output short circuits, high and low water pressure, input and output phase failure, high temperature and sensor faults
- 24V, 10V and 5V supply circuits
- Digital and analogue (voltage or current) inputs
- Relay and analogue outputs
- Multi-functional terminals

Three Phase 415VAC IN / Three Phase 415VAC OUT

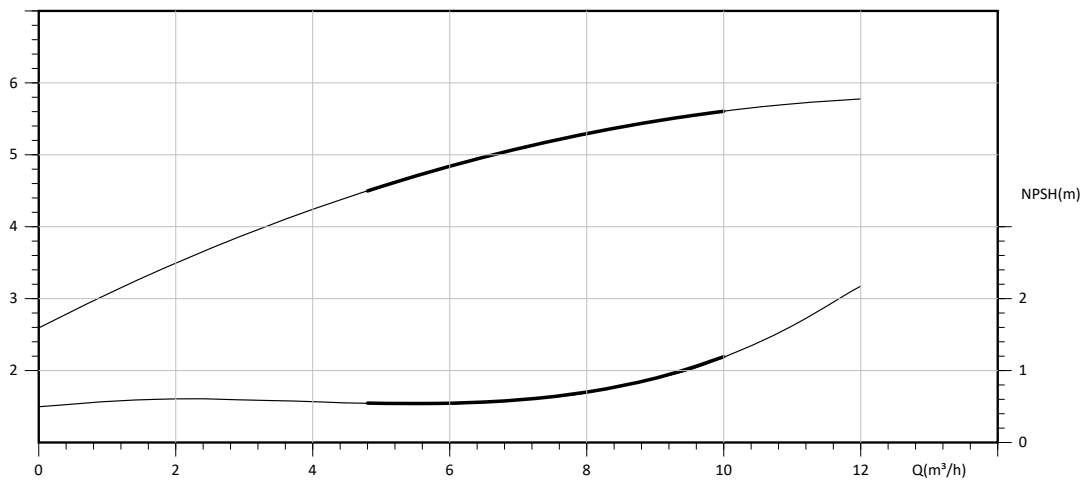
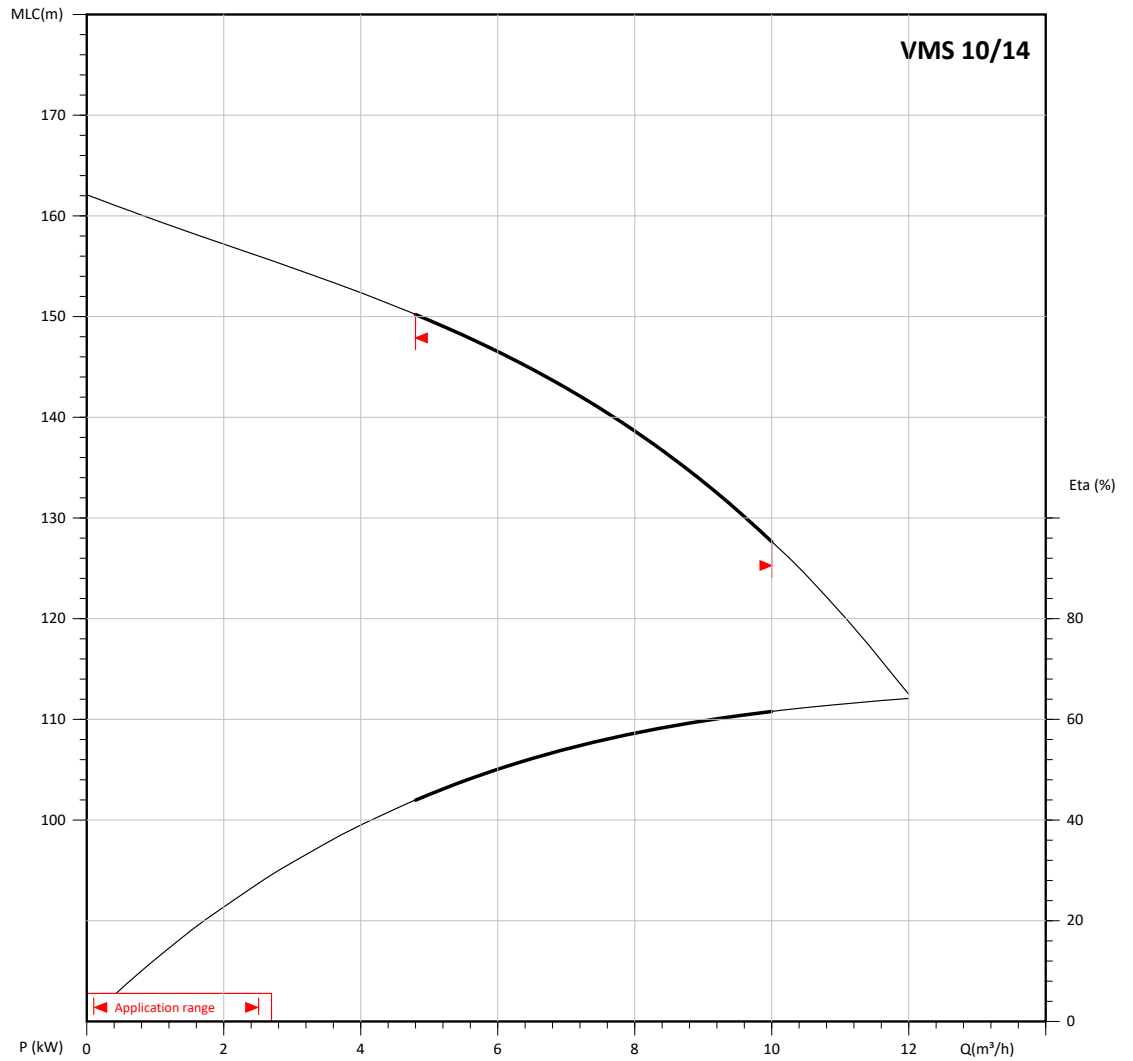
TECHNICAL DATA

| | |
|-------------------------|--------------------------|
| INPUT VOLTAGE | 3Ph 415VAC -10% / +5% |
| INPUT FREQUENCY | 50/60Hz 5% fluctuations |
| OUTPUT VOLTAGE | 3 phase 415VAC out |
| OUTPUT FREQUENCY | 0 - 200Hz |
| OUTPUT RATING | 13.0 amps. Nominal 5.5kW |
| SPEED HOLDING PRECISION | +/- 1% |
| INGRESS PROTECTION | I.P. 54 |
| OPERATING TEMPERATURE | -10°C to +40°C |



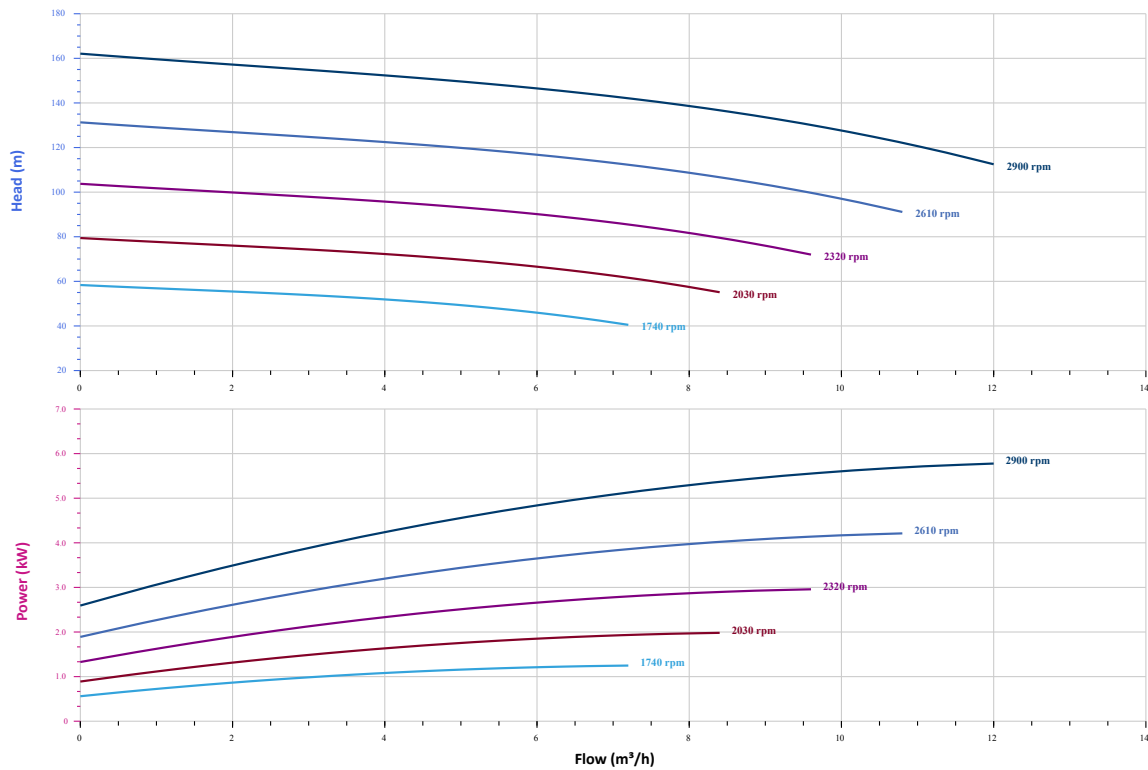
PERFORMANCE CURVES

The hydraulic performance curve have been tested with water at 20°C, density 1000kg/m³, and at 1bar atmospheric pressure.
GB/T 32162016 Grade 3B

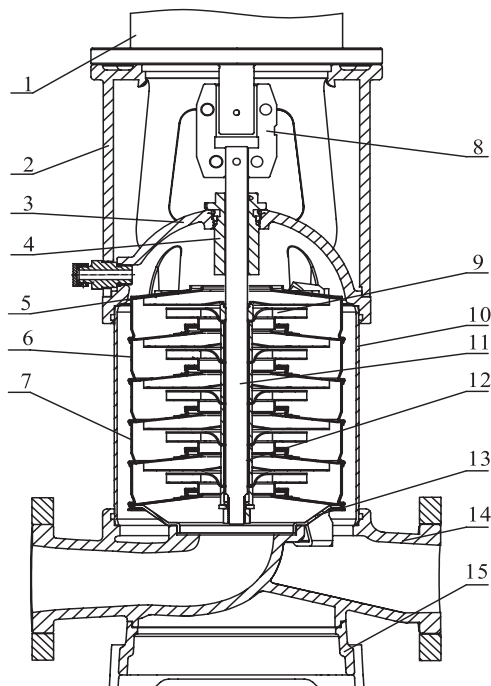


*MLC Meter Liquid Column Head unit is meter

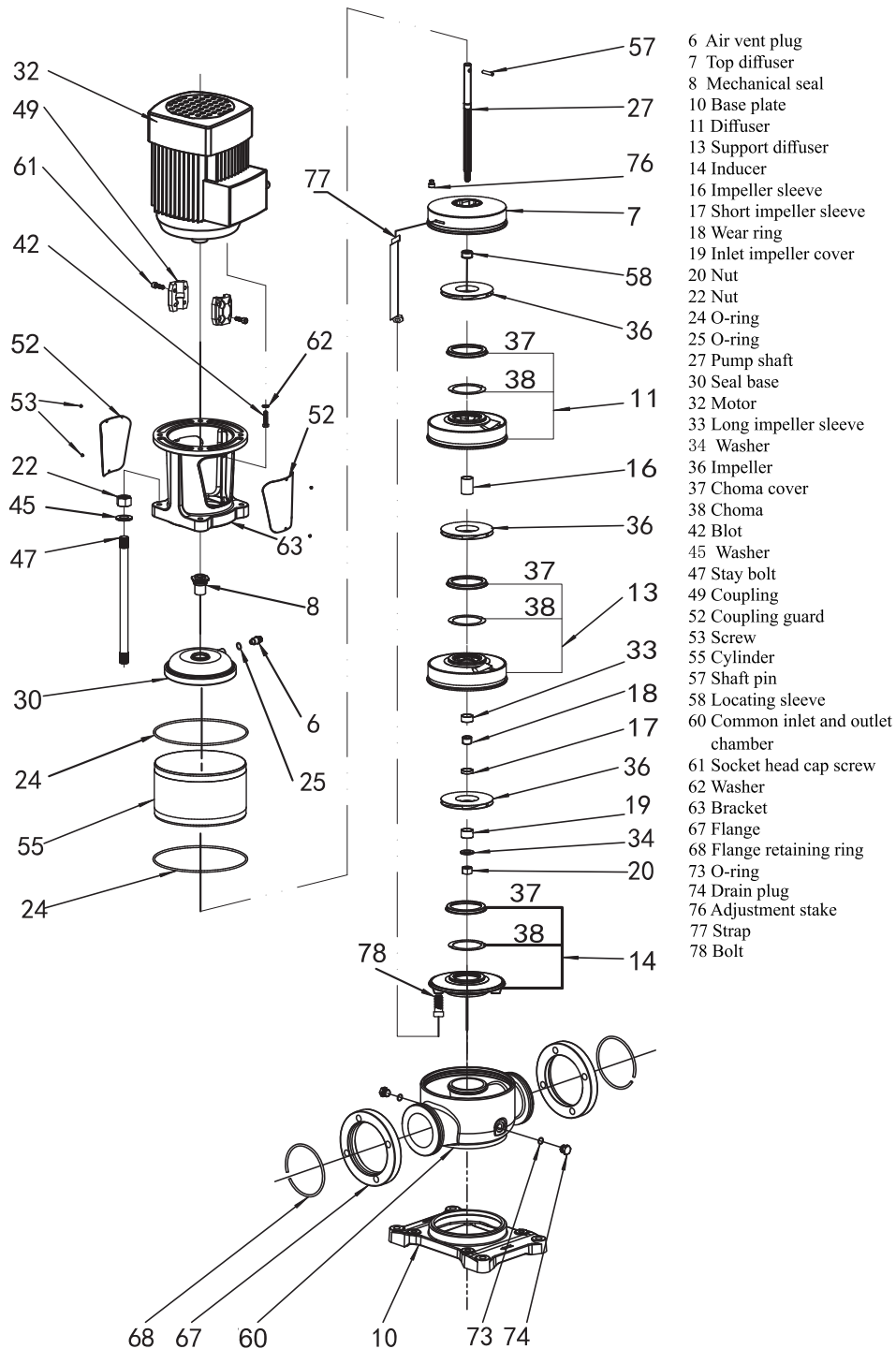
VFD CURVE



CUTAWAY



| | | |
|----|----------------------|-------------------------------------|
| 1 | Motor | / |
| 2 | Bracket | Ductile Cast Iron |
| 3 | Seal Base | Stainless / Ductile Cast Iron |
| 4 | Mechanical Seal | AS-L-16 |
| 5 | Top Diffuser | Stainless Steel |
| 6 | Diffuser | Stainless Steel |
| 7 | Support Diffuser | Stainless Steel |
| 8 | Coupling | Stainless Steel |
| 9 | Impeller | Stainless Steel |
| 10 | Cylinder | Stainless Steel |
| 11 | Shaft | Stainless Steel |
| 12 | Intermediate Bearing | SIC / WC |
| 13 | Inducer | Stainless Steel |
| 14 | Inlet/Outlet Chamber | Stainless Steel / Ductile Cast Iron |
| 15 | Base | Ductile Cast Iron |



WARRANTY / CERTIFICATIONS

