

## PRODUCT INTRODUCTION

The Bianco NXT Summit Series Drive Controller Kits are an all-in-one solution designed to achieve advanced control, enhanced protection and optimal energy efficiency with the Bianco NXT range of Variable Frequency Drives.

Featuring the latest touch screen technology and an intuitive user friendly menu, these kits provide easy access to all the information you need.

SUMMIT SERIES VMS solutions are designed for performance, reliability and ease of use.

## PUMP TECHNICAL DATA

|                                |                              |
|--------------------------------|------------------------------|
| <b>RATED FLOW [M3/H]</b>       | 4m3/hr                       |
| <b>MAX FLOW</b>                | 6m3/hr                       |
| <b>MAX HEAD</b>                | 110.7M                       |
| <b>OPTIMUM OPERATING RANGE</b> | 2.41m3/hr @ 102.4m 39.4% eff |
|                                | 5m3/hr @ 89.9m 56.6% eff     |
| <b>WORKING AIR TEMP</b>        | 0°C - 40°C                   |
| <b>LIQUID TEMPERATURE</b>      | -15°C - 120°C                |
| <b>HIGHEST EFFICIENCY</b>      | 58.4%                        |
| <b>MAXIMUM PUMP PRESSURE</b>   | 33 bar                       |
| <b>NET WEIGHT (KG)</b>         | 38kg                         |

|                              |                        |
|------------------------------|------------------------|
| <b>RATED VOLTAGE/CURRENT</b> | 3~ 415V +10% - 6% 4.6A |
|                              | 3~ 230V +10% - 6% 8.0A |
| <b>POWER (KW)</b>            | 2.2kW 2 pole           |
| <b>MOTOR IP RATING</b>       | IP55                   |
| <b>MOTOR INSULATION</b>      | Class F                |
| <b>MOTOR EFFICIENCY STD</b>  | I.E.3                  |
| <b>MOTOR EFFICIENCY</b>      | 84.2%                  |
| <b>COS Ø</b>                 | 0.84                   |
| <b>MECHANICAL SEAL</b>       | AS-L-12                |
| <b>OUTLET DIN FLANGE</b>     | DN32                   |

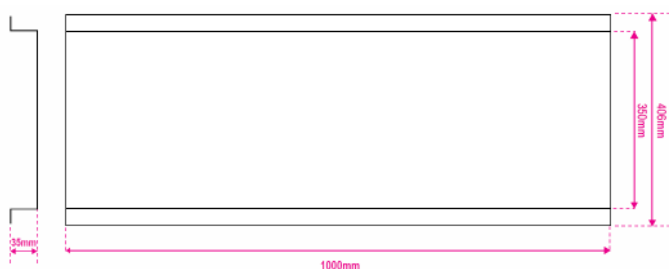


Image illustrative only



## INCLUDES

- Galvanised dual pump base
- 2 x VMS Pumps
- 2 x NXT Drives (Variable Frequency Drive)
- 4-20mA 16 bar Pressure Transducer
- Stainless Steel Counter Flanges
- Gaskets to suit Counter Flanges
- Watermarked Spring Check Valve
- Manifold (304 Stainless Steel)
- 30 Bar Liquid Filled Pressure Gauge
- Outlet side SS Isolation Valve
- BPT18 25 bar rated Pressure Tank with 304 SS 25mm isolating valve



Base 1000 x 406mm x 35mm high

BIA-NXT-DRIVE3-22

## PRODUCT DETAILS



The NXT DRIVE Series are a range of pump-specific Variable Frequency Drives designed for the Australasian market with both the end-user and the technician in mind.

Featuring a full colour touch screen interface for clear concise system information, fault codes and protection notices with a handy setup wizard so you're always in control. NXT DRIVE is both simple to set up and to use.

Perfect for achieving onstant pressure management of a single pump with advanced control, enhanced protection and optimal energy efficiency

Three Phase 415VAC IN / Three Phase 415VAC OUT

## FEATURES

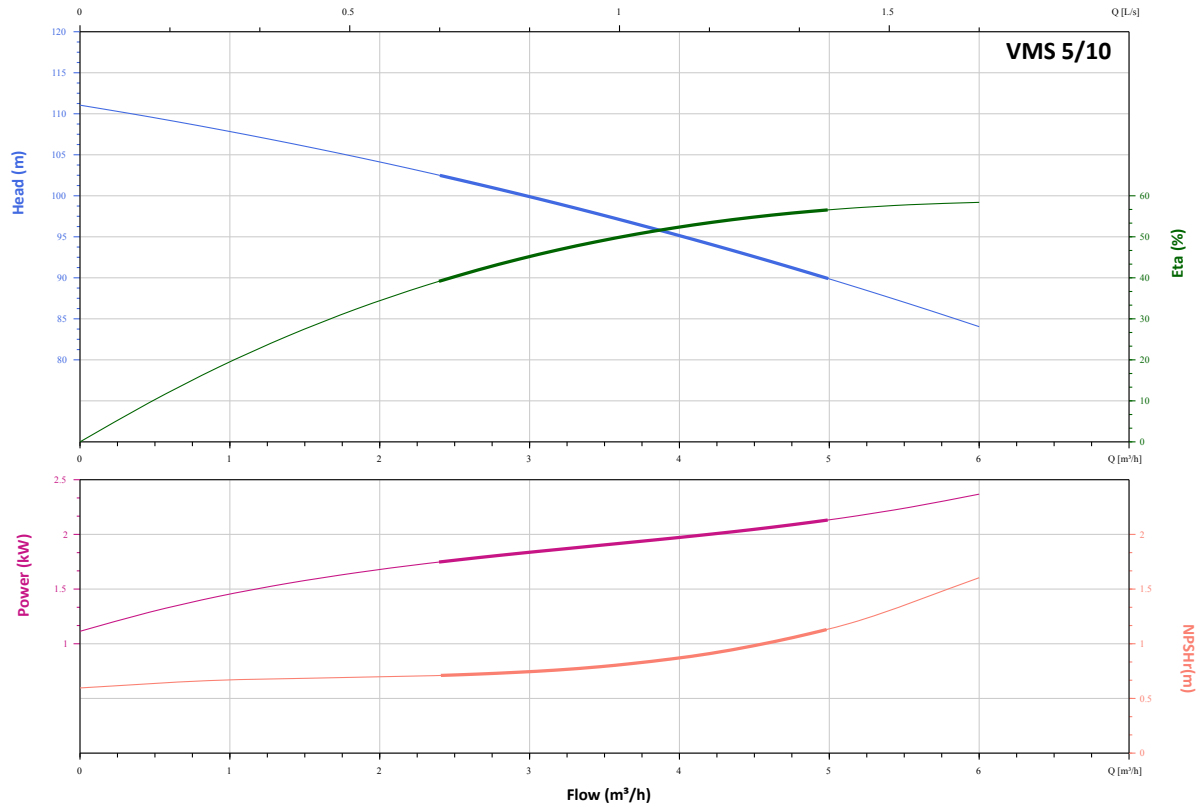
- Control and protect pumps up to 2.2 kW (5.1 amps)
- Variable frequency control to achieve constant pressure control
- Minimise wasted energy and reduce the need for large pressure tanks
- 'Soft-start' with low motor start current
- Flow, pressure and current protections
- RS485 comms
- 25 plain language fault messages
- Provides protection from; dry run, high and low voltage, input and output short circuits, high and low water pressure, input and output phase failure, high temperature and sensor faults
- 24V, 10V and 5V supply circuits
- Digital and analogue (voltage or current) inputs
- Relay and analogue outputs
- Multi-functional terminals

## TECHNICAL DATA

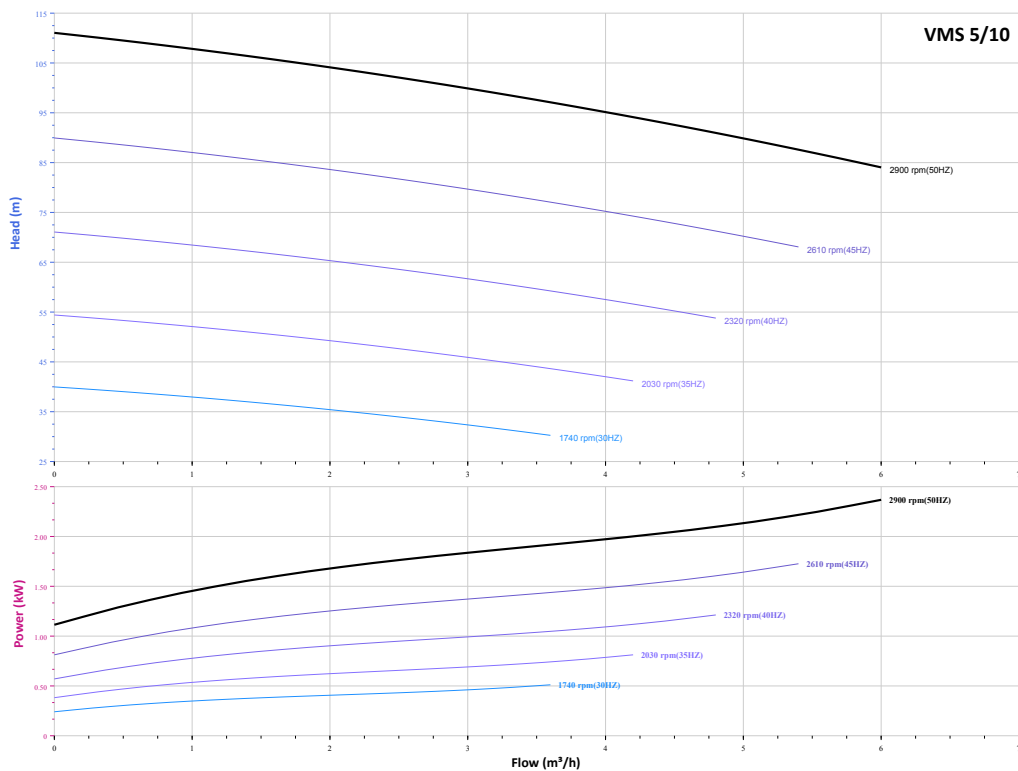
|                         |                         |
|-------------------------|-------------------------|
| INPUT VOLTAGE           | 3~ 415VAC -10% / +5%    |
| INPUT FREQUENCY         | 50/60Hz 5% flucuations  |
| OUTPUT VOLTAGE          | 3~ 415VAC out           |
| OUTPUT FREQUENCY        | 0 - 200Hz               |
| OUTPUT RATING           | 5.1 amps. Nominal 2.2kW |
| SPEED HOLDING PRECISION | +/- 1%                  |
| INGRESS PROTECTION      | I.P. 54                 |
| OPERATING TEMPERATURE   | -10°C to +40°C          |

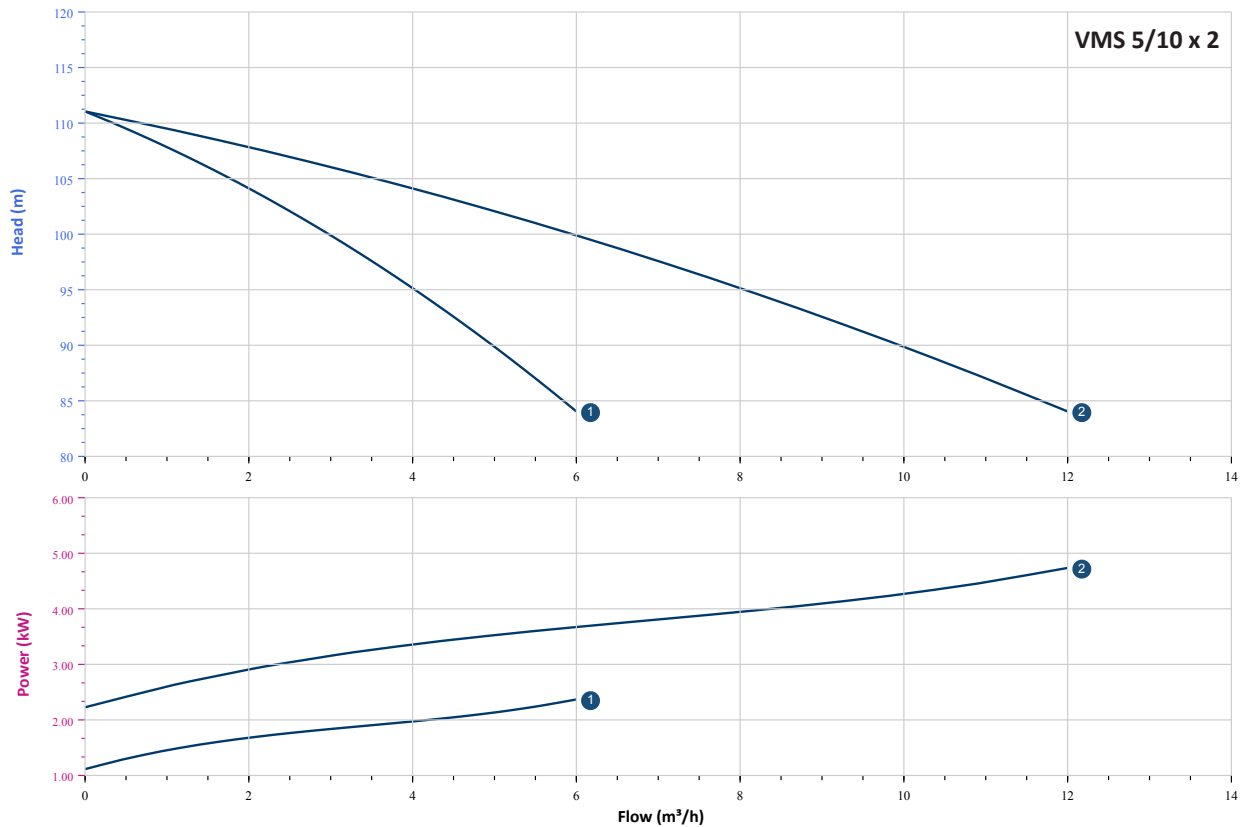
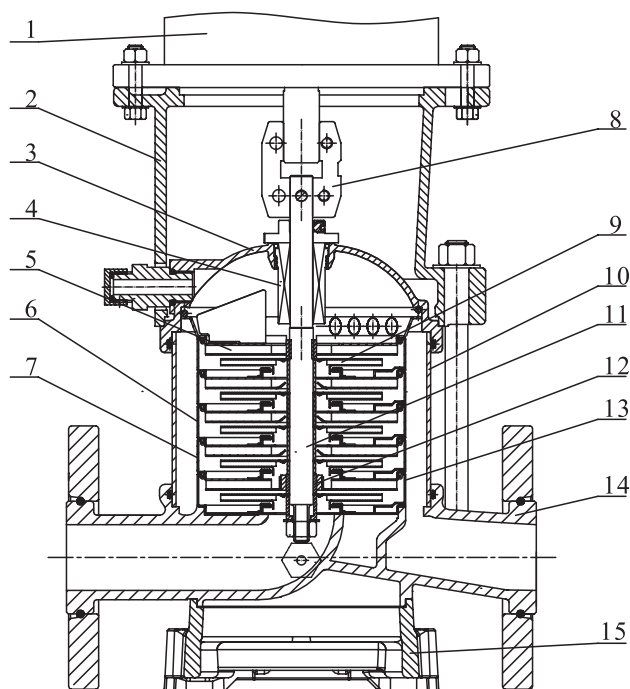


## SINGLE PUMP HYDRAULIC CURVE

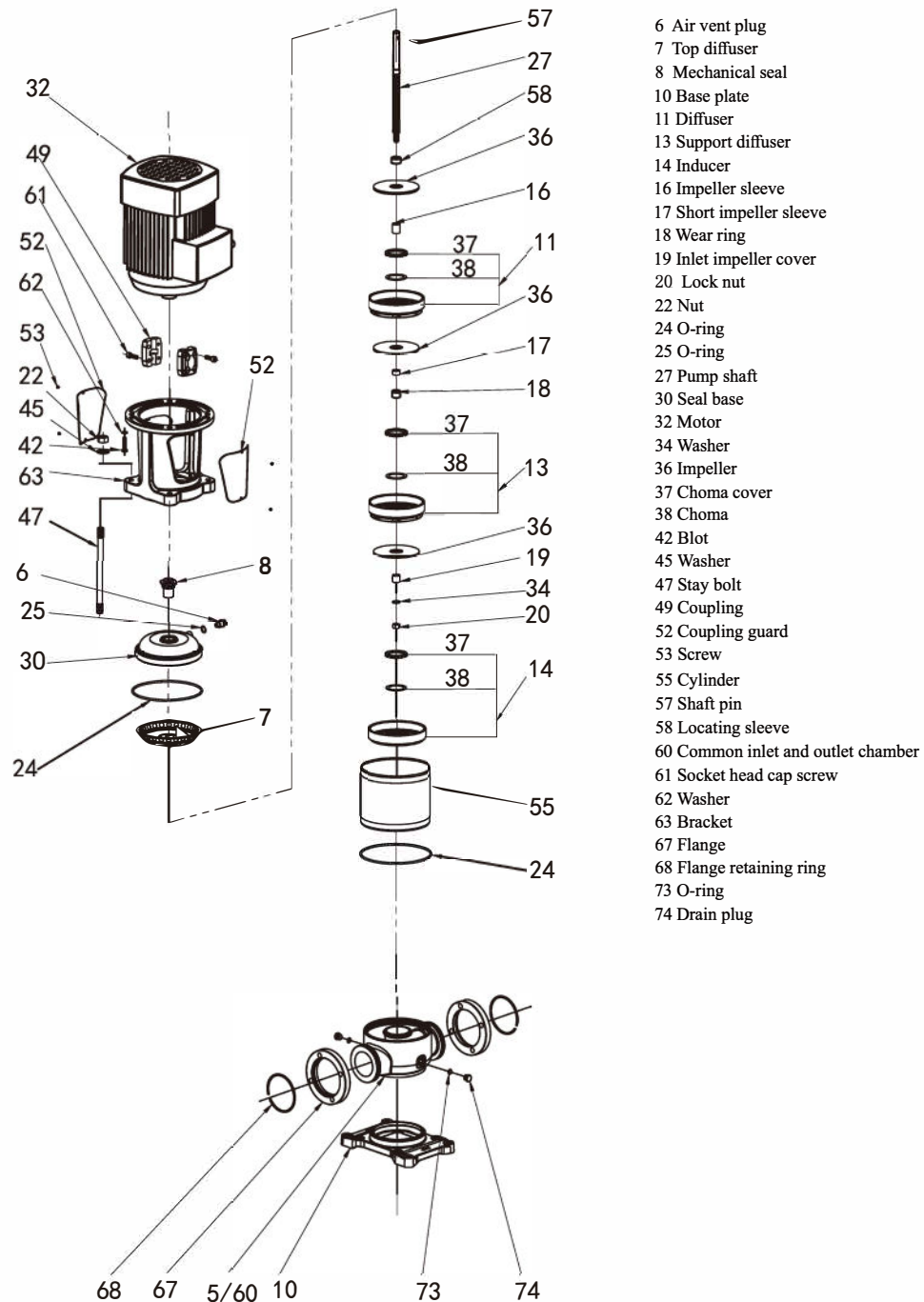


## VFD CURVE



**DUAL PUMP HYDRAULIC CURVE****CUTAWAY**

|    |                      |                                     |
|----|----------------------|-------------------------------------|
| 1  | Motor                | /                                   |
| 2  | Bracket              | Ductile Cast Iron                   |
| 3  | Seal Base            | Stainless / Ductile Cast Iron       |
| 4  | Mechanical Seal      | AS-L-16                             |
| 5  | Top Diffuser         | Stainless Steel                     |
| 6  | Diffuser             | Stainless Steel                     |
| 7  | Support Diffuser     | Stainless Steel                     |
| 8  | Coupling             | Stainless Steel                     |
| 9  | Impeller             | Stainless Steel                     |
| 10 | Cylinder             | Stainless Steel                     |
| 11 | Shaft                | Stainless Steel                     |
| 12 | Intermediate Bearing | SIC / WC                            |
| 13 | Inducer              | Stainless Steel                     |
| 14 | Inlet/Outlet Chamber | Stainless Steel / Ductile Cast Iron |
| 15 | Base                 | Ductile Cast Iron                   |



## WARRANTY / CERTIFICATIONS

