

## Instruction for installation and maintenance GRAF MINIMAX-PRO Filter internal

### MINIMAX-PRO Filter internal

with straight outlet

Order No. 340119

For Platin and Carat tanks



The points described in these instructions must be observed under all circumstances. All warranty rights are invalidated in the event of non-observance. Separate installation instructions are enclosed in the transportation packaging for all additional articles purchased from GRAF.

The components must be checked for any damage prior to installation under all circumstances.

Missing instructions can be downloaded on [www.graf.info](http://www.graf.info) or can be requested from GRAF.

### Table of contents

1.	General notes	2
1.1	Safety	2
2.	Scope of supply	2
2.1	MINIMAX-PRO Filter internal components	2
2.2	MINIMAX-PRO Filter internal details	3
3.	Technical data	
3.1	Dimensions with straight outlet	4
4.	Assembly	
5.	Installation and assembly	4
5.1	Overview Platin tank / Filter with straight outlet	4
5.2	Installation of inlet pipe, outlet pipe and overflow siphon	6
5.3	Preparation filter for installation	6
5.4	Insert the filter into the tank	7
5.	Installation and assembly	7
5.5	Overview Carat tank / Filter with straight outlet	7
5.6	Installation of inflow pipe and overflow siphon	8
5.7	Preparation filter for installation	8
5.8	Insert the filter into the tank	9
6.	Commissioning & maintenance	9

## 1. General notes

### 1.1 Safety

A second person is required for health & safety, in particular when entering the tank..

The relevant regulations and standards must additionally be taken into consideration during installation, assembly, servicing, repair, etc. Relevant notes can be found in the corresponding sections of these instructions.

During all work on the system or parts of the system, the entire system must always be rendered inoperable and secured to prevent unauthorised reactivation. The entire system must always be taken out of action & secured against being switched on again whilst work, repair or maintenance is carried out on parts of the system or the system.

Except when working in the tank; the tank cover must always be kept closed due to acute danger of accident.

GRAF offers an extensive range of genuine parts & accessories, all of which are designed to ensure the system performs as specified. The use of non-genuine Grafparts or accessories may lead to the system's functional capability or failure, therefore invalidating Warranties & Guarantees and liability for resulting damage.

## 2. Scope of supply

### 2.1 MINIMAX-PRO Filter internal components

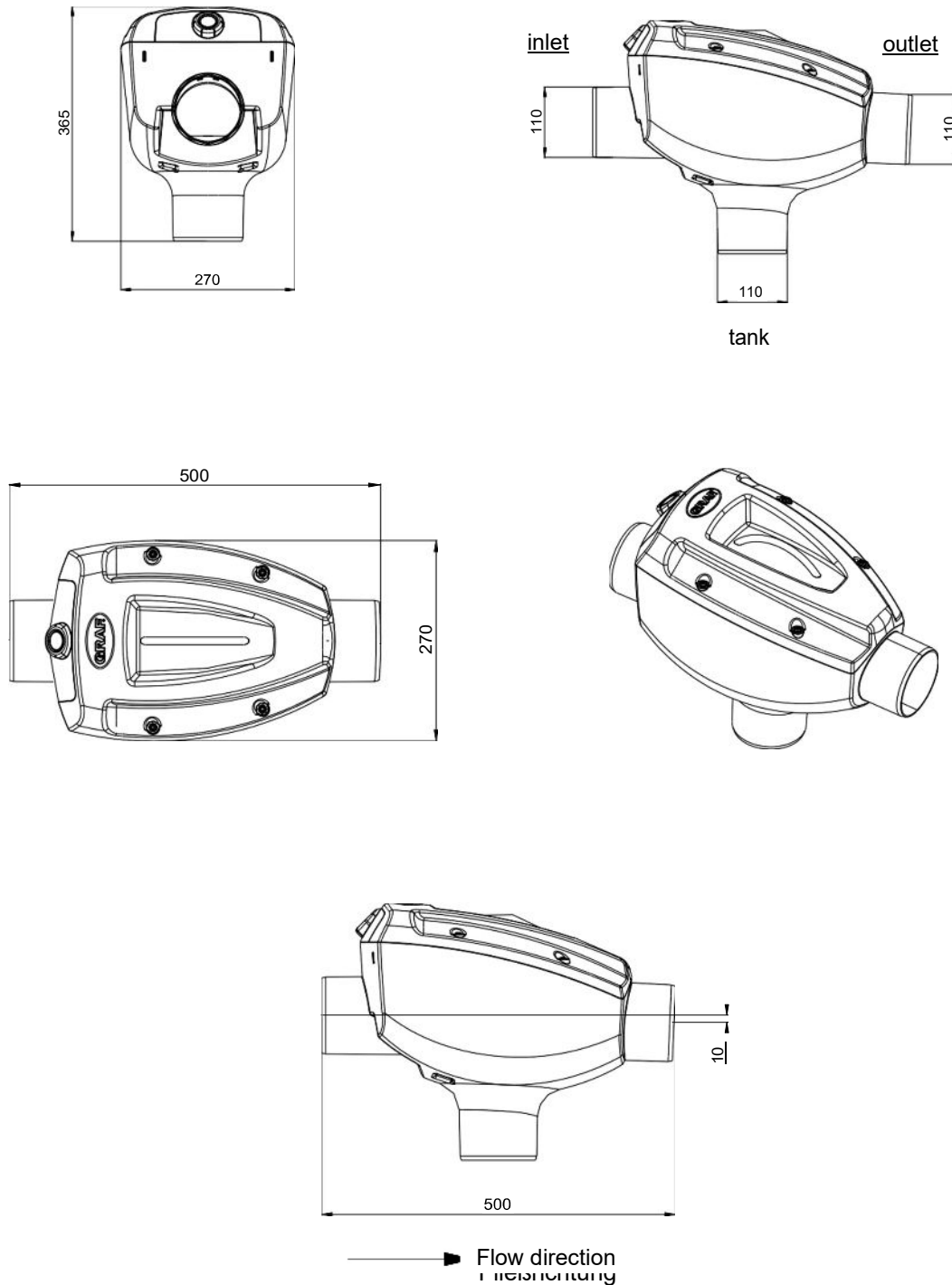
- 1x Filter body and mesh (pre-assembled)
- 2x Spannfix collars
- 1x Emergency overflow siphon
- 1x Rodent guard
- 1x Inflow calming pipe (slotted pipe)
- 1x DN100, 150mm long rubber ring grey pipe adaptor (outlet)
- 1x DN100, 250mm long rubber ring grey pipe adaptor (inlet)

### 2.2 MINIMAX-PRO Filter internal details

- The MINIMAX-PRO Filter is suitable for installation in a manhole or a underground tank.
- The difference in height between inlet and outlet is around 10 mm with a straight outlet.
- The filter is suitable for roof areas up to 350 m².
- The mesh width of the sieve insert is 0.35 mm.

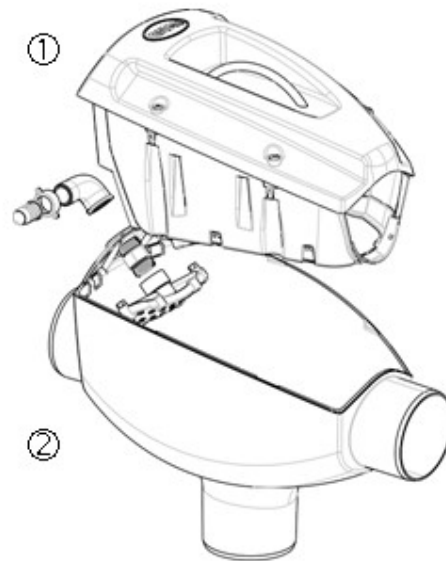
### 3. Technical data

#### 3.1 Dimensions with straight outlet



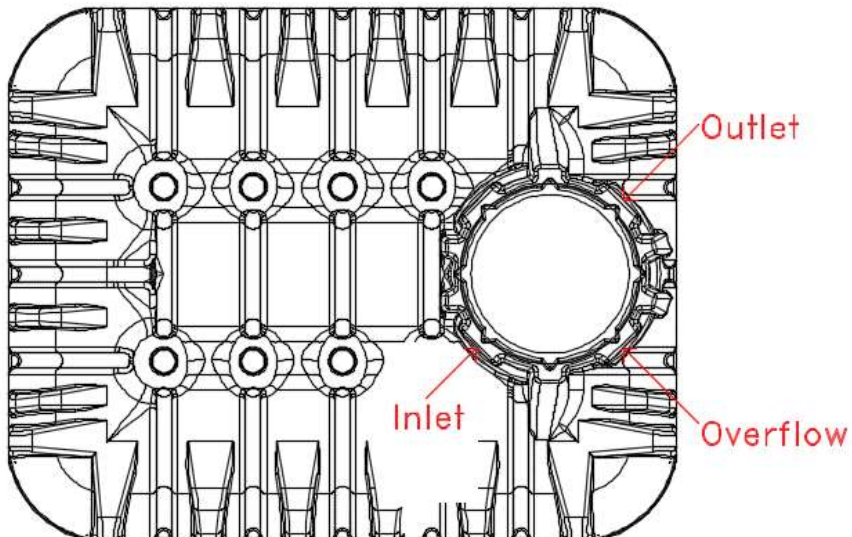
## 4. Assembly

- ① Clear transparent cover/  
Filter insert
- ② Housing including nozzle holder
- ③ Optional cleaning unit  
(340040)

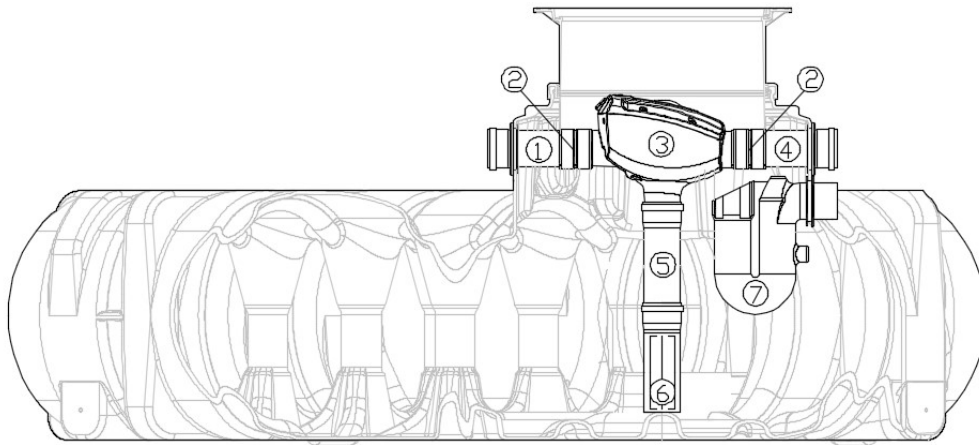


## 5. Installation and assembly

### 5.1 Overview Platin tank / Filter with straight outlet



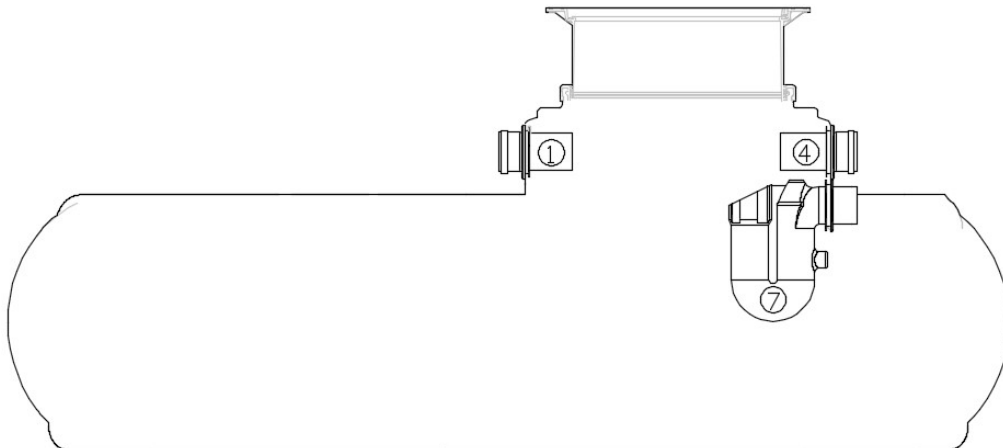
## 5. Installation and assembly



- ① DN100, 250mm long rubber ring grey pipe adaptor
- ② Spannfix collars
- ③ Filter body and filter mesh
- ④ DN100, 150mm long rubber ring grey pipe adaptor
- ⑤ PVC DN100 pipe (not supplied), refer to section 5.3
- ⑥ Inflow calming pipe
- ⑦ Overflow siphon and rodent guard

## 5. Installation and assembly

### 5.2 Installation of inlet pipe, outlet pipe and overflow siphon



- ⑦ Insert the overflow siphon in the lower seal till block. Insert the rodent guard in the opening of the connecting pipe (not supplied). **Note:** overflow seal is installed from the inside of the tank.
- ① Insert the inlet pipe DN100 from outside till block.
- ④ Insert the outlet pipe DN100 from outside till block.

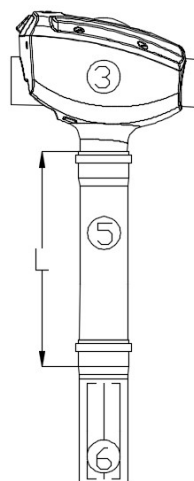
### 5.3 Preparation filter for installation

Connect the filter body ③ with a PVC pipe DN 100 ⑤ (on site) with the Inflow Calming Pipe ⑥ (contained in filter package 340119).

Secure the connections with Self Tapping screws to prevent connections separating.

Platin tank	1500 L	3000 L	5000 L	7500 L
[L]	470 mm*	500 mm*	675 mm*	1075 mm*

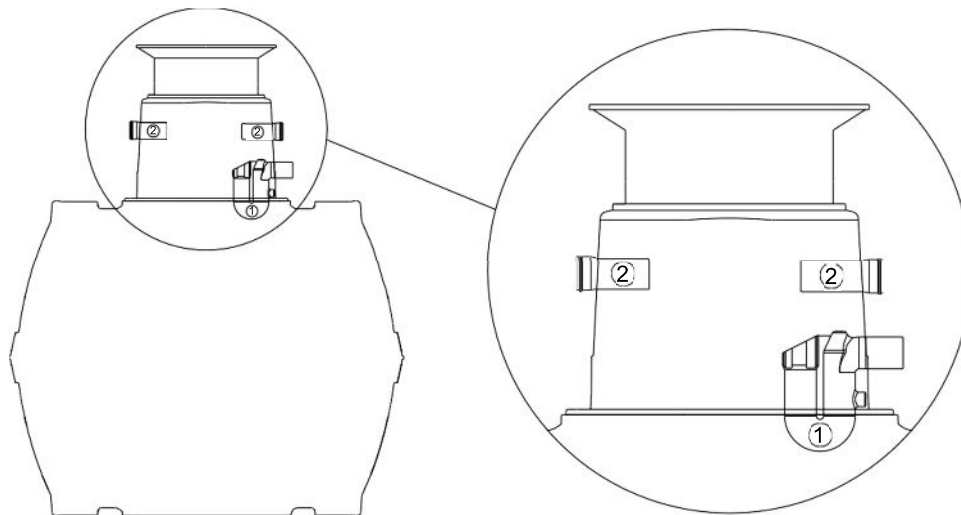
\* (+/- 10 mm)





## 5. Installation and assembly

### 5.6 Installation of inflow pipe and overflow siphon



- ① Insert the overflow siphon in the lower seal till block. Insert the rodent guard in the opening of the connecting pipe (not supplied). **Note:** overflow seal is installed from the inside of the tank.
- ② Insert the inlet and outlet pipes DN100 from outside till block.

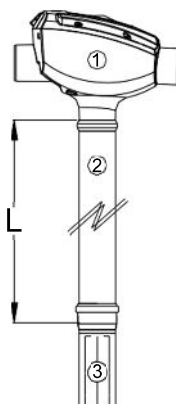
### 5.7 Preparation filter for installation

Connect the filter body ① with a PVC pipe DN 100 ② (on site) with the Inflow Calming pipe ③ (contained in filter package 340119).

Secure the connections with Self Tapping screws to prevent connections separating.

Carat tank	2700 L	3750 L	4800 L	6500 L	8500L	10000 L
[L]	1190 mm*	1380 mm*	1610 mm*	1890 mm*	1790 mm*	1990 mm*

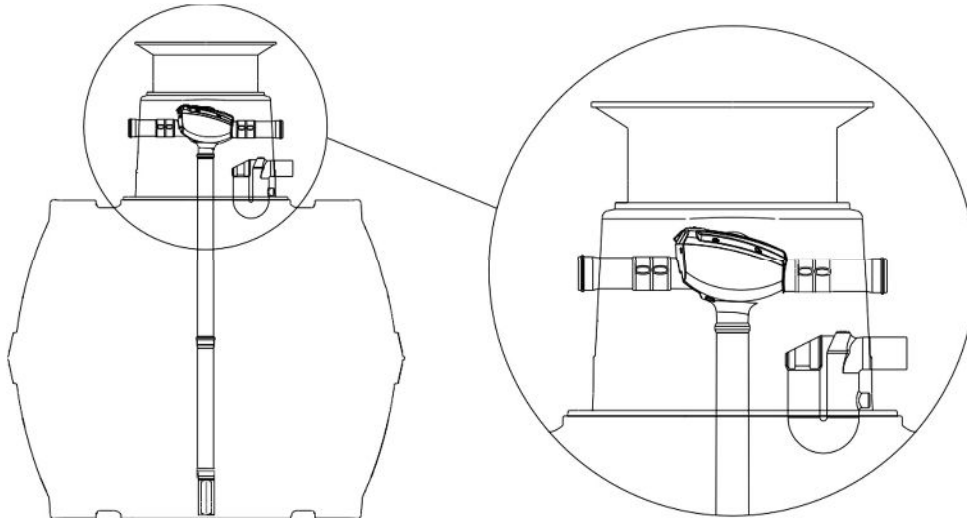
\* (+/- 10 mm)





## 5. Installation and assembly

### 5.8 Insert the filter into the tank



Insert the filter, prepared with the inflow calming pipe, in the tank.

Secure the filter body to the inlet and outlet pipes using the Spannfix collars supplied.

## 6. Commissioning & Maintenance

The filter sieve functions only in one flow direction; the direction is marked on the filter itself. Run water into the tank and filter system to check the connections.

To ensure maximum water yield, the filter must be checked for dirt and debris immediately following the first rainfall occurrence after the tank installation. It must also be checked after any major rainfall event and after any long dry spells. It is suggested that the complete system is inspected at least every 3 months for leakage, cleanliness and stability. To ensure the expected water yield is delivered, it is important to inspect and clean the filter sieve at regular intervals. When carrying out a service of the integrated filter it is also required that the overflow siphon is checked and cleaned.

info@graf.info  
www.graf.info

## Notes

[illegible]



